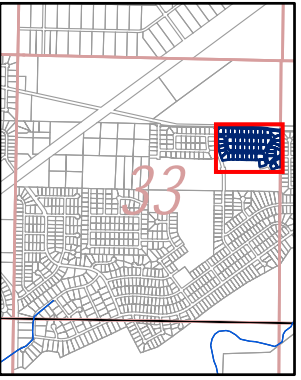
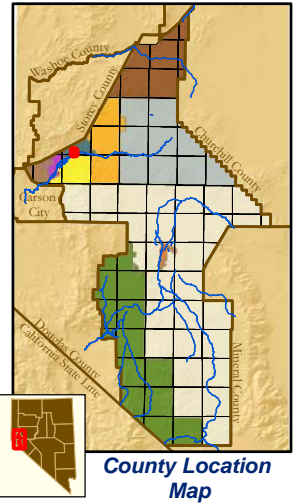
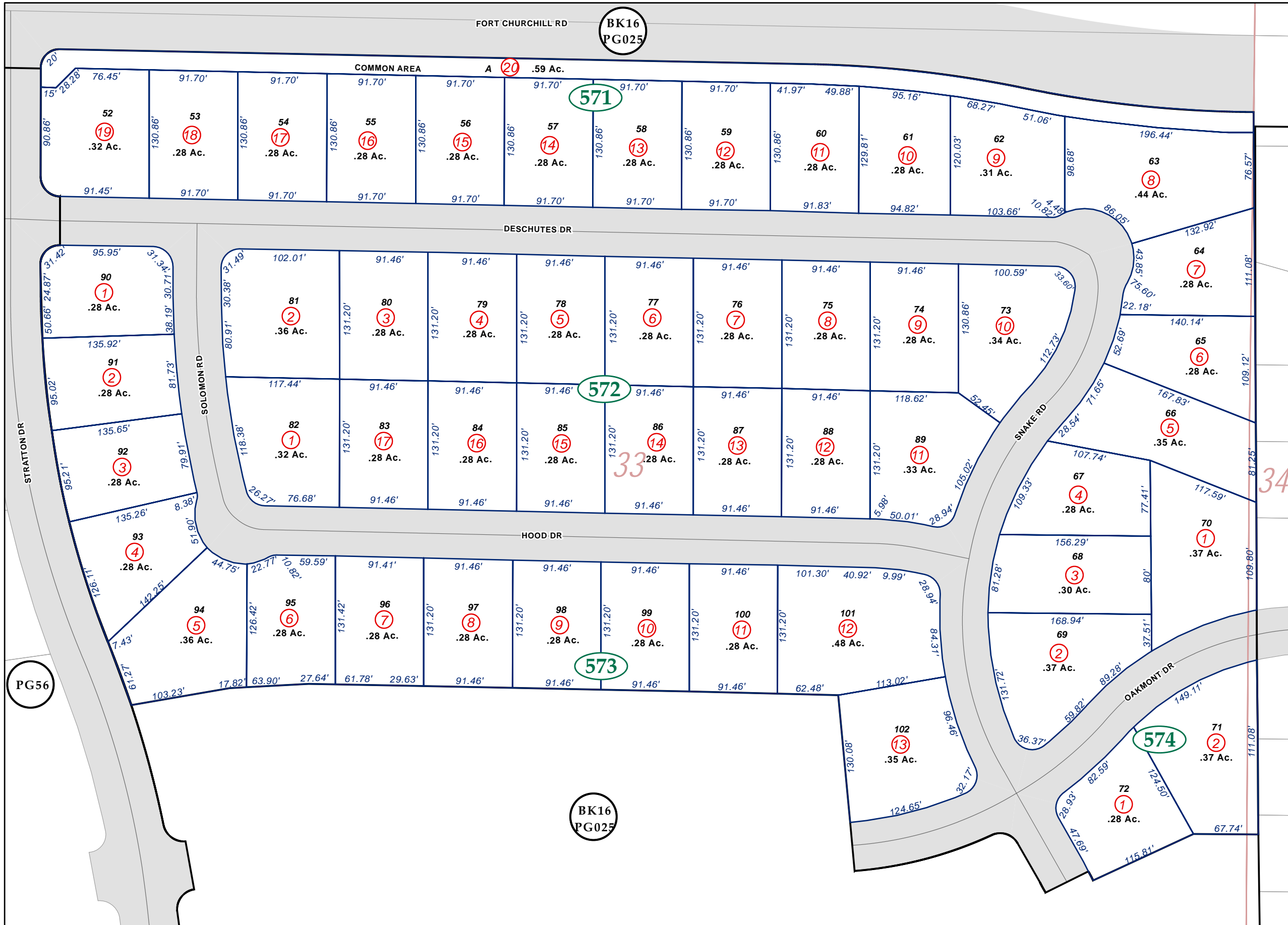


Portion NE 1/4 Section 33, T17N - R22E, MD&M

29-57



Map Elements

- 1/4 Corner Section
- Section Ties
- Dimensions
- Parcel Lot
- Parcel Number
- Acres of Parcel
- Recorded Map Image
- Parcel Boundaries
- Block Number
- Parcel Book & Page Number
- Page Number

Cities & Townships

- Dayton
- Dayton Valley
- Fernley
- Mark Twain
- Mason Valley
- Mound House
- Silver City
- Silver Springs
- Smith Valley
- Stagecoach
- Yerington

Scale: 1" = 100'
Revised: April 26, 2007



NOTE: This is for assessment use only and does not represent a survey. No liability is assumed as to the accuracy of the data delineated herein. Use of this plat for other than assessment purposes is forbidden unless approved by the Lyon County Assessor's Office.