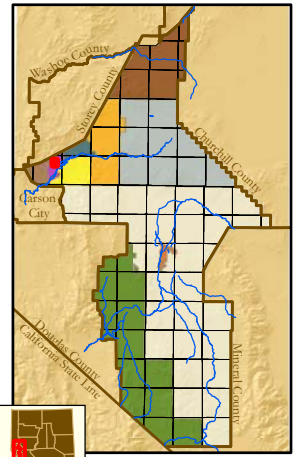
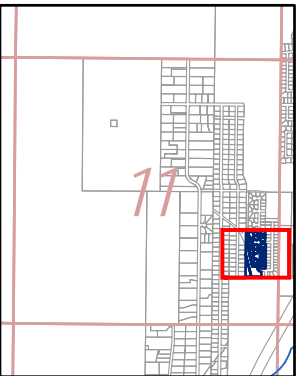


Portion E 1/2 SE 1/4 Section 11, T16N-R21E, MD&M

29-49



County Location Map



Location Map

Map Elements

- ✦ 1/4 Corner Section
- * Section Ties
- 300' Dimensions
- 1 Parcel Lot
- ③ Parcel Number
- 0.13 Ac. Acreage of Parcel
- PM 136149 Recorded Map Image
- ▭ Parcel Boundaries
- ④11 Block Number
- Ⓚ19 PG57 Parcel Book & Page Number
- Ⓚ24 Page Number

Cities & Townships

- Dayton
- Dayton Valley
- Fernley
- Mark Twain
- Mason Valley
- Mound House
- Silver City
- Silver Springs
- Smith Valley
- Stagecoach
- Yerington

Scale: 1" = 100'
Revised: May 7, 2007



NOTE: This is for assessment use only and does not represent a survey. No liability is assumed as to the accuracy of the data delineated hereon. Use of this plat for other than assessment purposes is forbidden unless approved by the Lyon County Assessor's Office.

BK16
PG404

GOLD COUNTRY ESTATES UNIT 1C
SM 405697 5/03/07

GOLD COUNTRY ESTATES UNIT 1B
SM 394084 10/30/06

GOLD COUNTRY ESTATES UNIT 1A
SM 380101 4/20/06