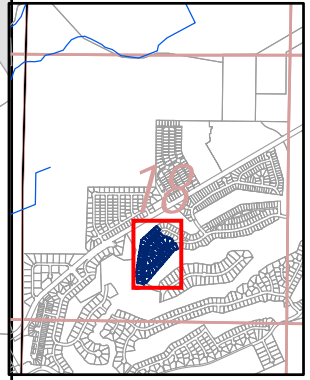
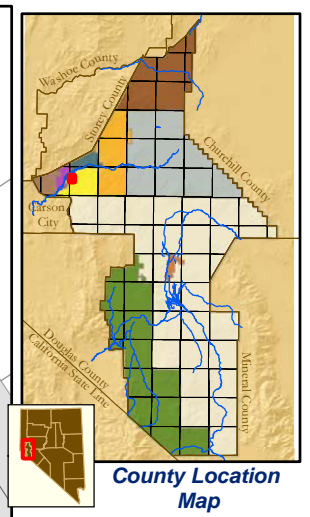
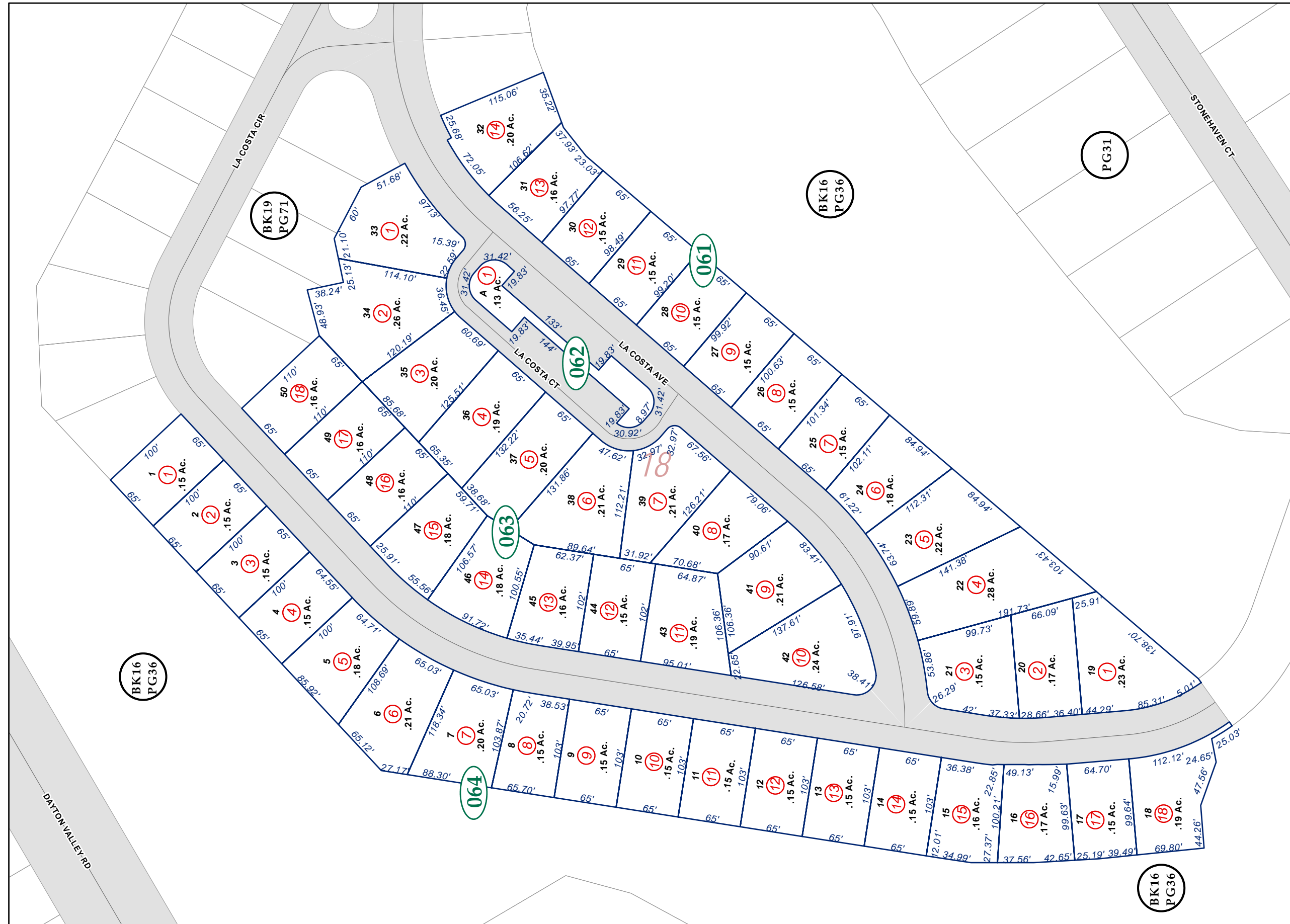


Portion S 1/2 Section 18, T16N - R22E, MD&M

29-06



Map Elements

- ✕ 1/4 Corner Section
- * Section Ties
- 300' Dimensions
- 1 Parcel Lot
- ③ Parcel Number
- 0.13 Ac. Acreage of Parcel
- PM 136149 Recorded Map Image
- ▭ Parcel Boundaries
- ④11 Block Number
- ⓀⓂⓅ Parcel Book & Page Number
- ⓂⓂⓂ Page Number

Cities & Townships

- Dayton
- Dayton Valley
- Fernley
- Mark Twain
- Mason Valley
- Mound House
- Silver City
- Silver Springs
- Smith Valley
- Stagecoach
- Yerington

Scale: 1" = 100'
Revised: November 9, 2007

Compass rose showing North (N), South (S), East (E), and West (W). Below it is the logo for LYON COUNTY.

NOTE: This is for assessment use only and does not represent a survey. No liability is assumed as to the accuracy of the data delineated herein. Use of this plat for other than assessment purposes is forbidden unless approved by the Lyon County Assessor's Office.