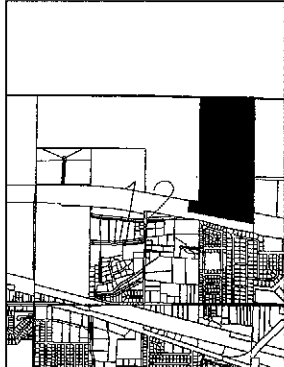
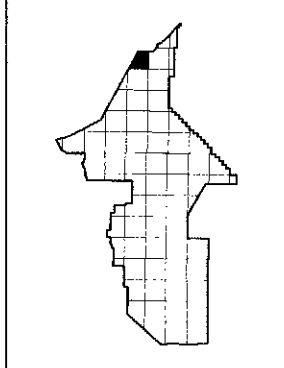
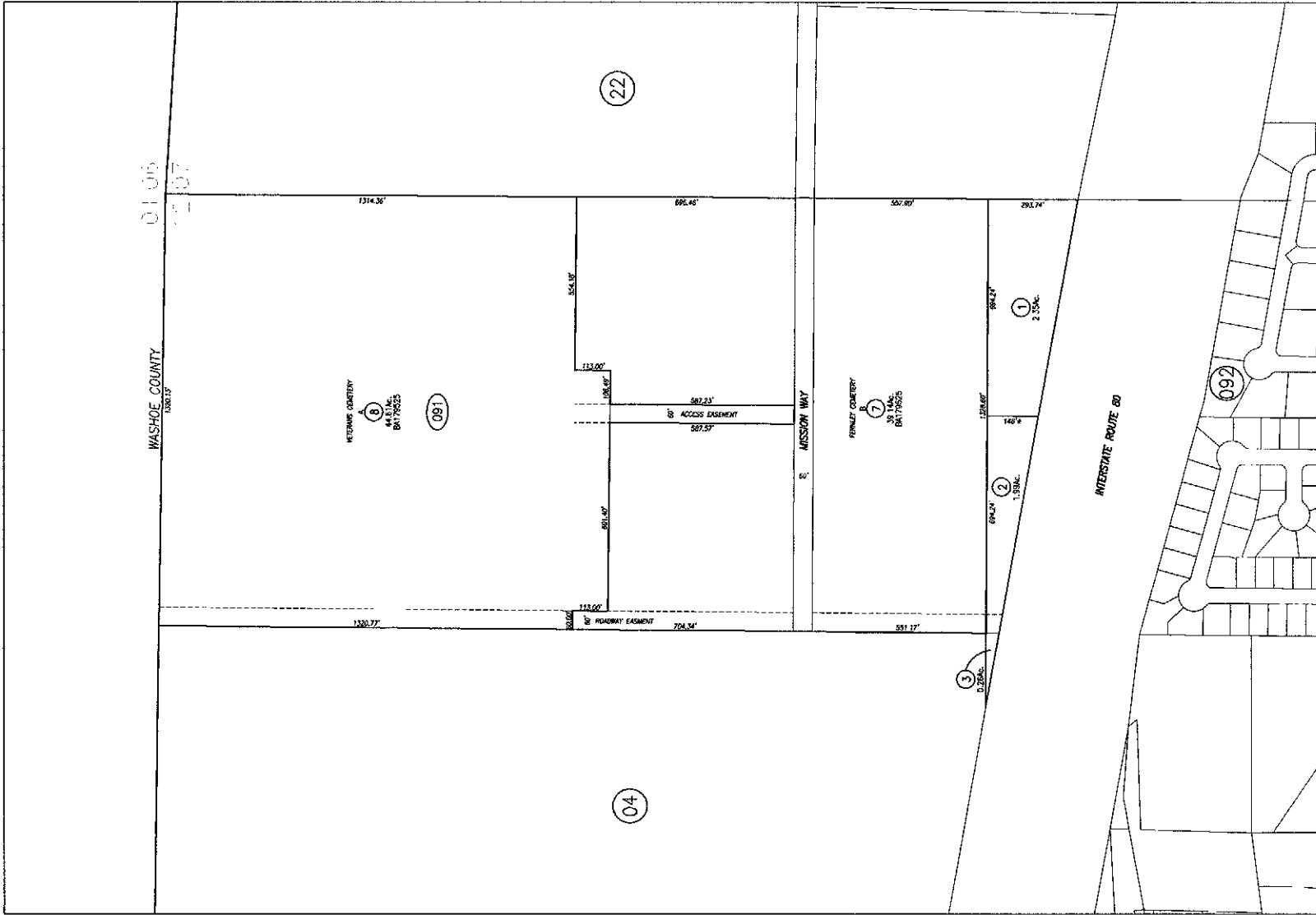


E1/2 NE1/4, Section 12, T20N, R24E, MDB&M

21-09



SCALE: 1" = 300'
REVISED: July 22, 2004

LYON COUNTY

NOTE: This plat is for assessment use only and does not represent a survey. No liability is assumed as to the accuracy of the data delineated hereon. Use of this plat for other than assessment purposes is forbidden unless approved by the Lyon County Assessor's Office.