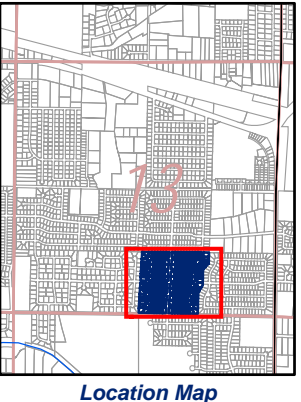
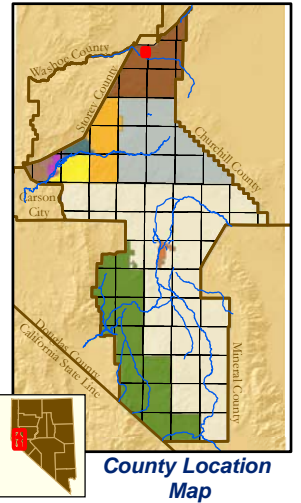
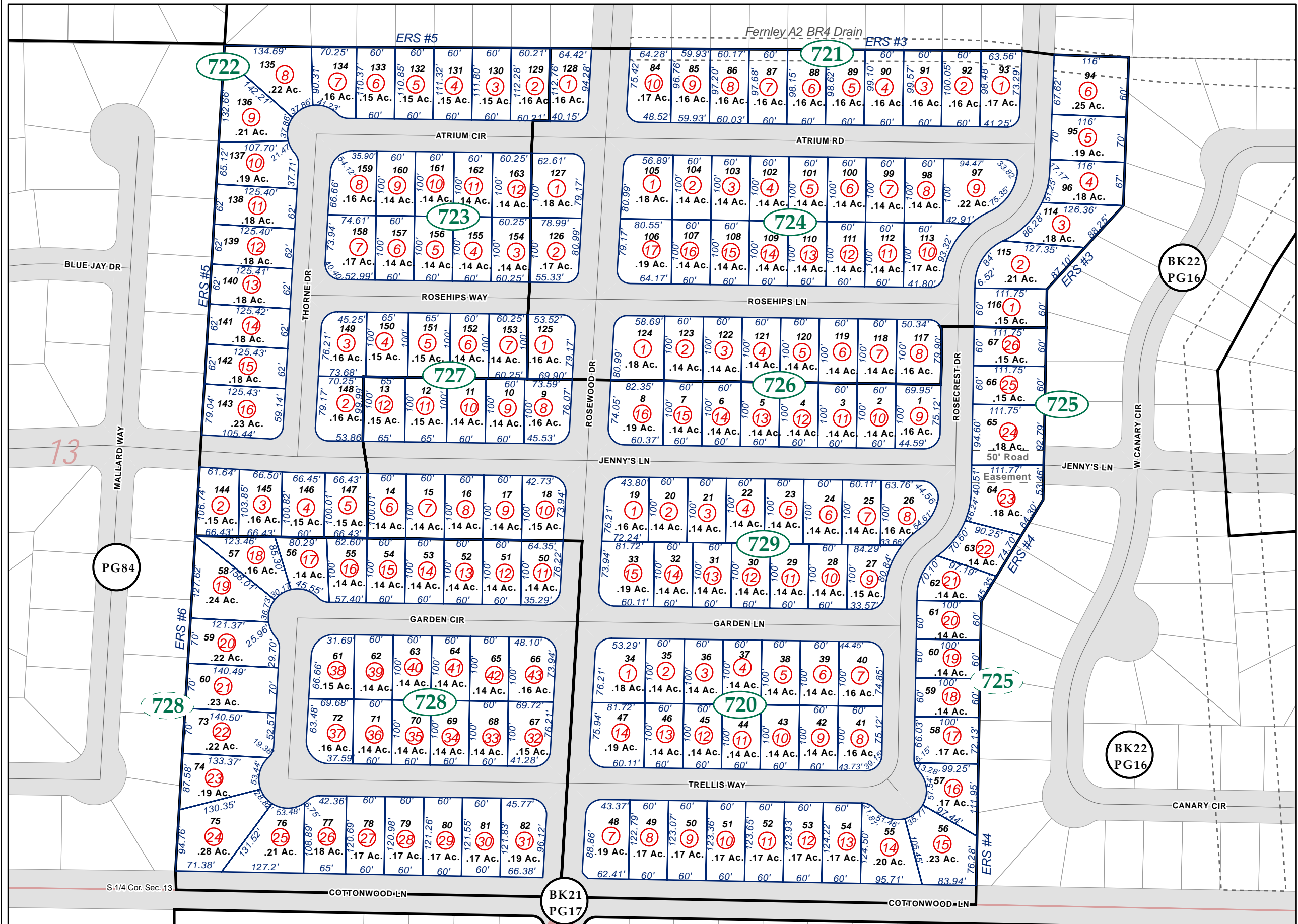


Portion SE 1/4 Section 13, T20N-R24E, MD&M

20-72



**Map Elements**

- 1/4 Corner Section
- Section Ties
- Dimensions
- Parcel Lot
- Parcel Number
- 0.13 Ac. Acreage of Parcel
- PM 136149 Recorded Map Image
- Parcel Boundaries
- Block Number
- Parcel Book & Page Number
- Page Number

**Cities & Townships**

- Dayton
- Dayton Valley
- Fernley
- Mark Twain
- Mason Valley
- Mound House
- Silver City
- Silver Springs
- Smith Valley
- Stagecoach
- Yerington

Scale: 1" = 150'  
Revised: May 31, 2007



NOTE: This is for assessment use only and does not represent a survey. No liability is assumed as to the accuracy of the data delineated herein. Use of this plat for other than assessment purposes is forbidden unless approved by the Lyon County Assessor's Office.

ENNOR RANCH ESTATES #6  
S.M. 275036 4/10/02

ENNOR RANCH ESTATES #5  
S.M. 255253 12/08/00

ENNOR RANCH ESTATES #4  
S.M. 258494 3/15/01

ENNOR RANCH ESTATES #3  
S.M. 243013 1/06/00