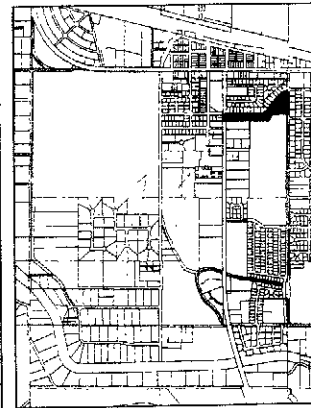
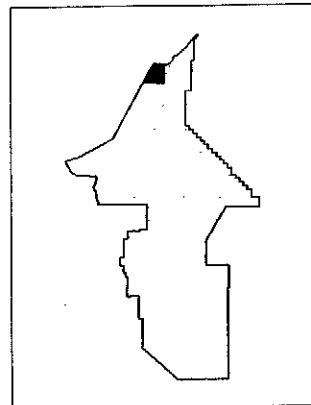
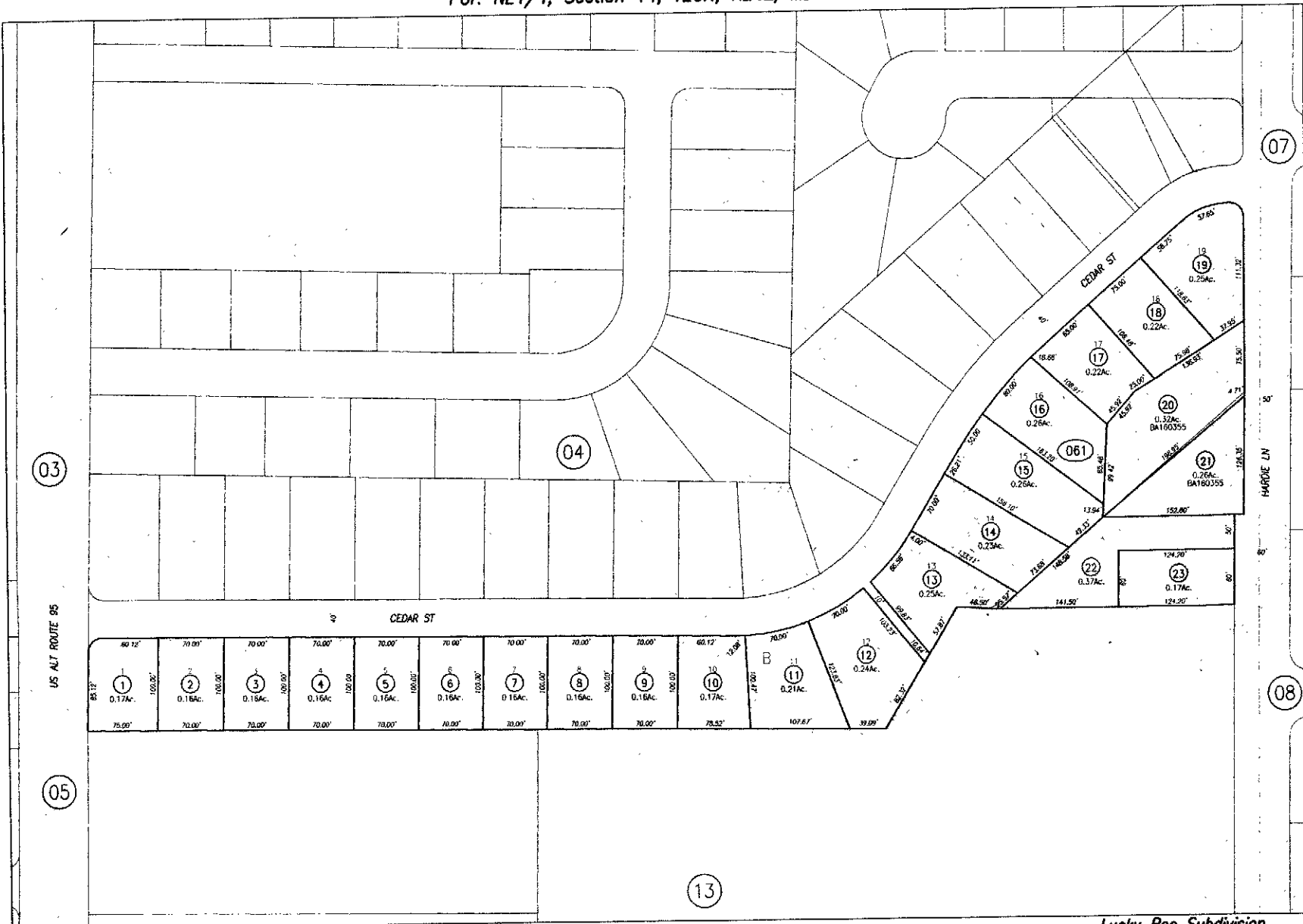


Por. NE1/4, Section 14, T20N, R24E, MDB&M

20-06



SCALE: 1" = 100'
REVISED: September 2, 2004

Lucky Bee Subdivision
S.M. 97396 01-13-64

LYON COUNTY

NOTE: This plot is for assessment use only and does not represent a survey. No liability is assumed as to the accuracy of the data delineated hereon. Use of this plot for other than assessment purposes is forbidden unless approved by the Lyon County Assessor's Office.