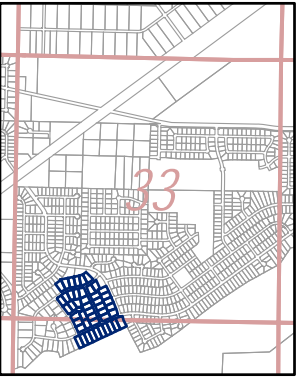
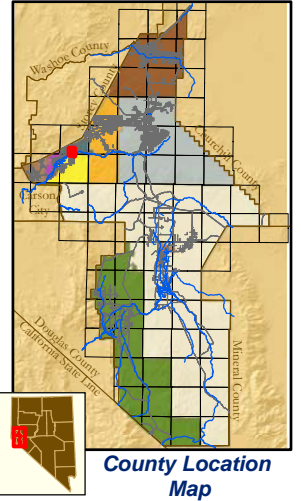


Por S1/2 Sec 33 T17N-R22E; Por N1/2 Sec 4 T16N-R22E; MD&M

19-97



Map Elements

- ✦ 1/4 Corner Section
- * Section Ties
- 300' Dimensions
- 1 Parcel Lot
- ③ Parcel Number
- 0.13 Ac. Acreage of Parcel
- PM 136149 Recorded Map Image
- Parcel Boundaries
- 411 Block Number
- BK12 PG06 Parcel Book & Page Number
- PG24 Page Number

Cities & Townships

- Dayton
- Dayton Valley
- Fernley
- Mark Twain
- Mason Valley
- Mound House
- Silver City
- Silver Springs
- Smith Valley
- Stagecoach
- Yerington

Scale: 1"= 150'
Revised: July 6, 2011

Compass rose showing North (N), South (S), East (E), and West (W). Below the compass is the logo for the Lyon County Assessor's Office.

NOTE: This is for assessment use only and does not represent a survey. No liability is assumed as to the accuracy of the data delineated herein. Use of this plat for other than assessment purposes is forbidden unless approved by the Lyon County Assessor's Office.