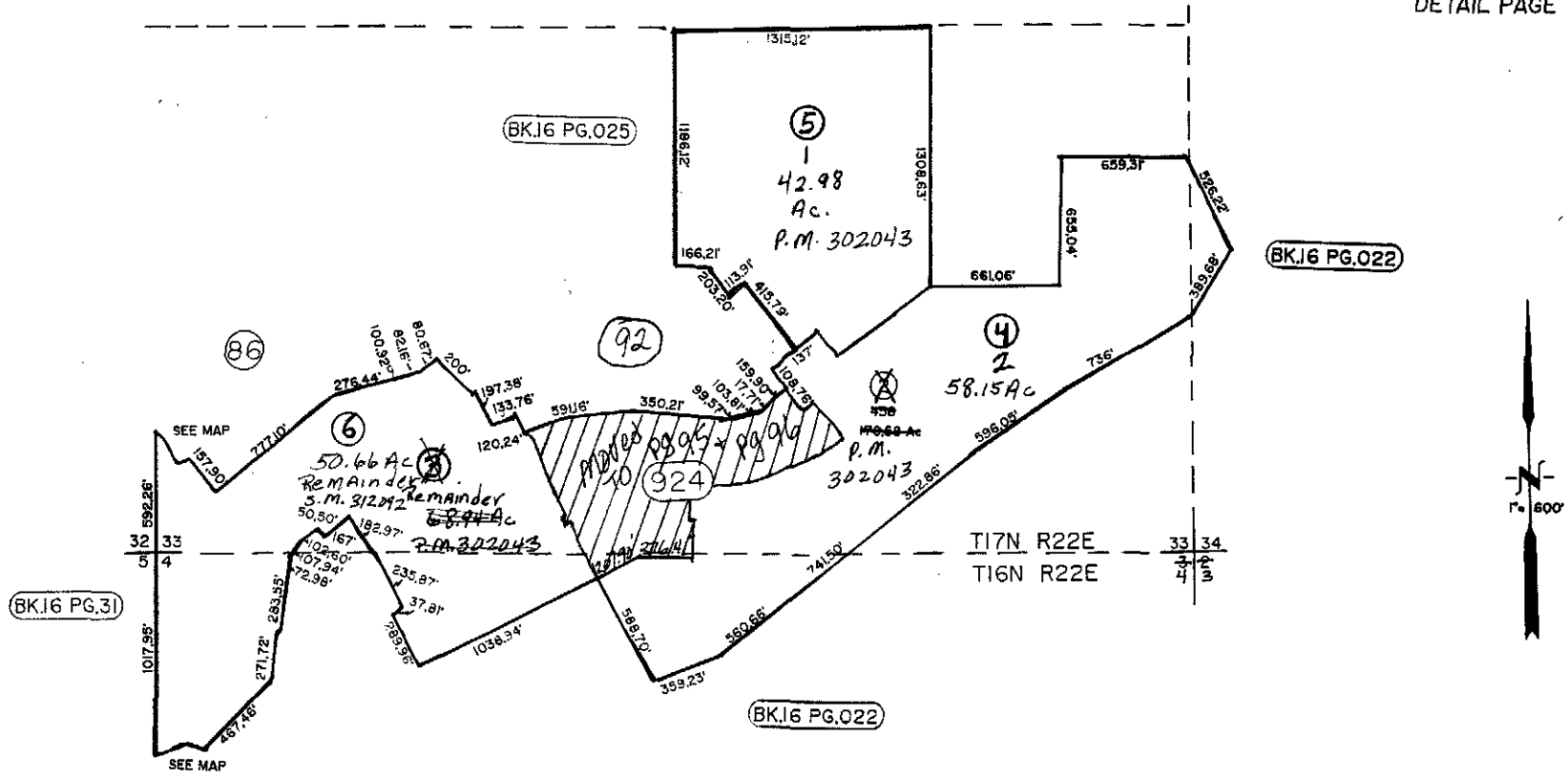


Por. Section 4, T16N-R22E & Por. of Secs. 33 & 34, T17N-R22E, M.D.M.

19-92
DETAIL PAGE



NOTE: This plat is for assessment use only and does not represent a survey. No liability is assumed as to the accuracy of the data delineated hereon. Use of this plat for other than assessment purposes is forbidden unless approved by the Lyon County Assessor's Office.

APRIL 2003/CK

LYON COUNTY

RIVERPARK UNIT 4
S.M. 294923 4/22/03