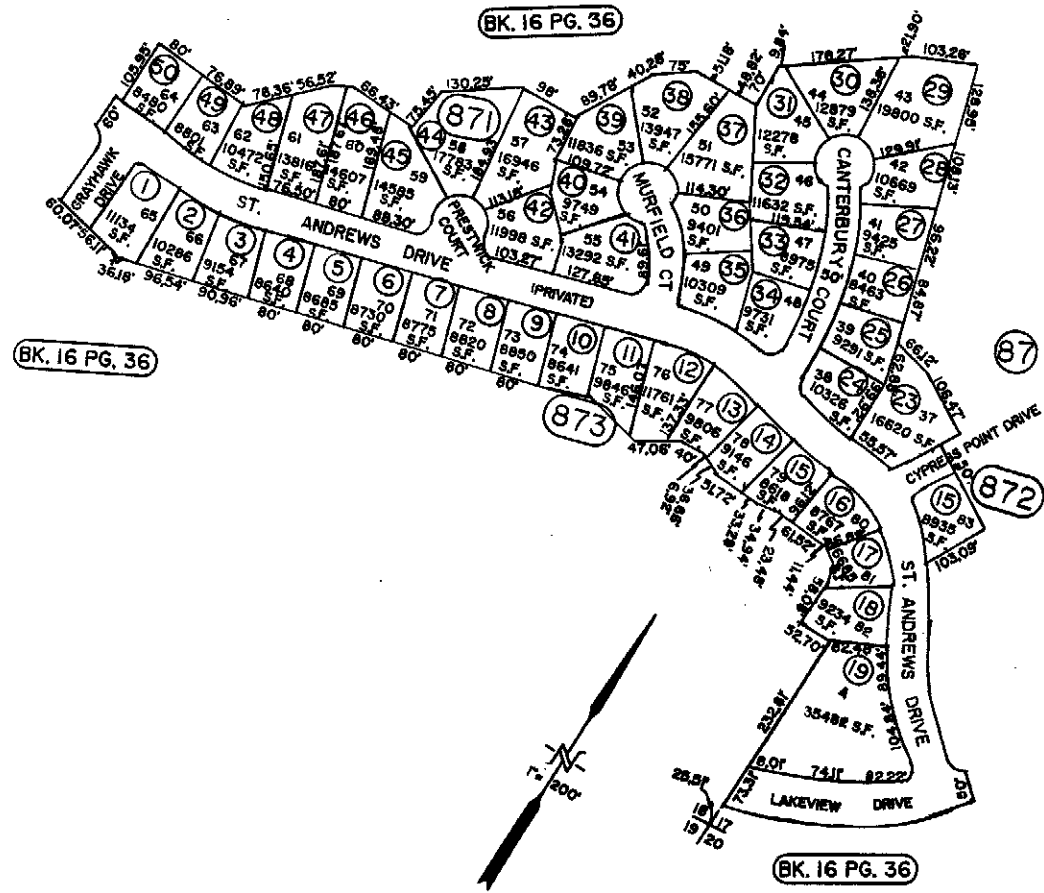


Por. SW⁴ Sec. 17 & Por. SE⁴ Sec. 18, T16N-R22E,M.D.M.

19-871, 872, 873
SUPPLEMENTAL PAGE I



JULY 2002/CK

LYON COUNTY
DAYTON VALLEY COUNTRY CLUB UNIT 5B
S.M. 279806 7/18/02