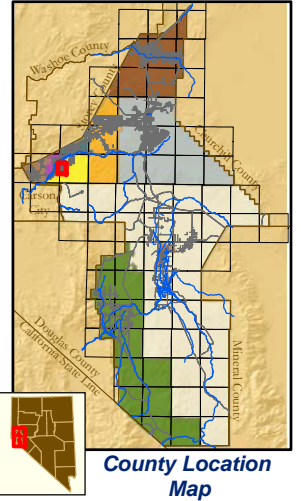
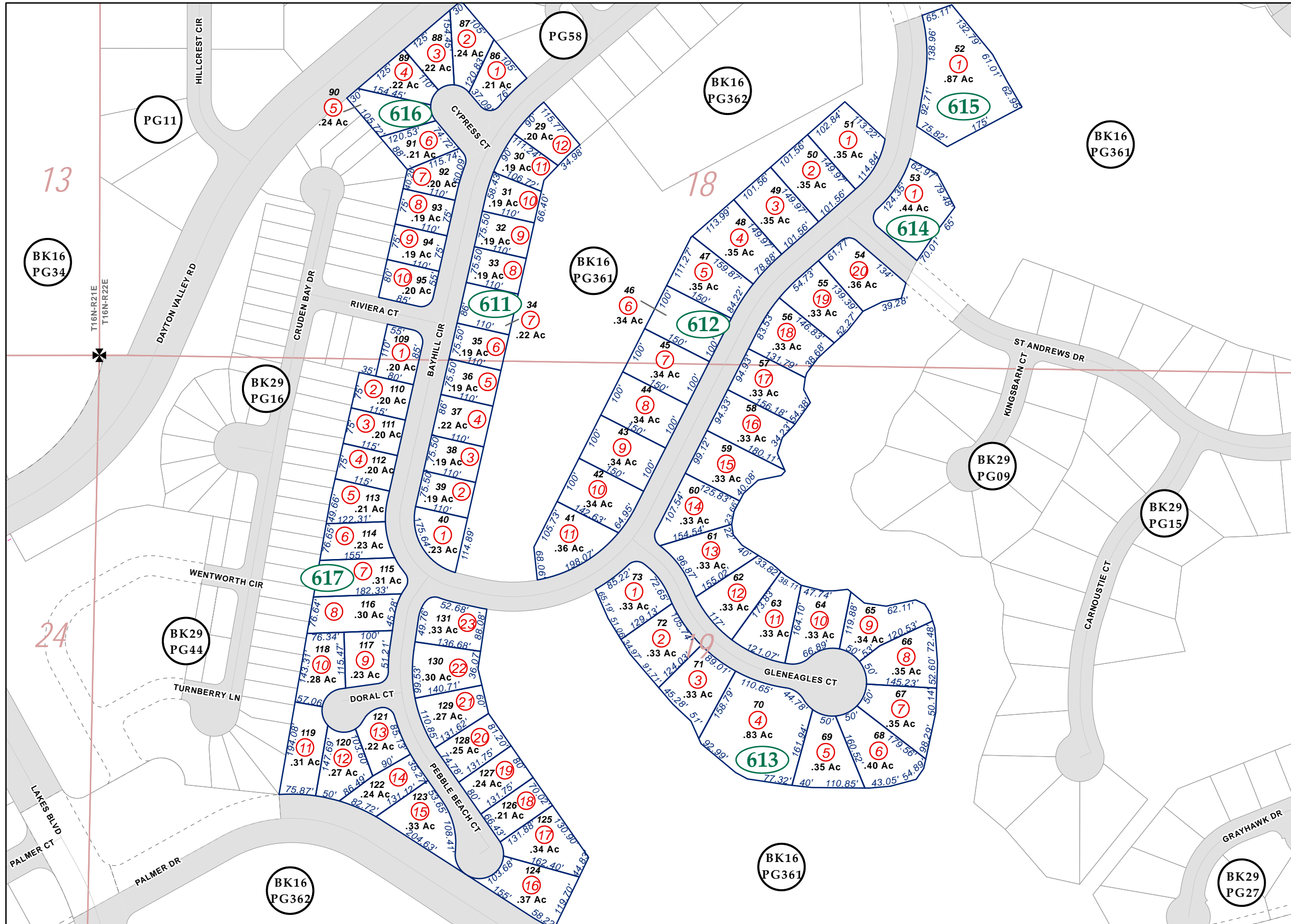


Por Section 18 & 19 T16N-R22E, MD&M

19-61



**Map Elements**

- ✱ 1/4 Corner Section
- \* Section Ties
- 300' Dimensions
- 1 Parcel Lot
- ③ Parcel Number
- 0.13 Ac. Acreage of Parcel
- PM 136149 Recorded Map Image
- ▭ Parcel Boundaries
- ④11 Block Number
- Ⓚ12 PG06 Parcel Book & Page Number
- Ⓚ24 Page Number

**Cities & Townships**

- Dayton
- Dayton Valley
- Fernley
- Mark Twain
- Mason Valley
- Mound House
- Silver City
- Silver Springs
- Smith Valley
- Stagecoach
- Yerington

Scale: 1" = 200'  
Revised: May 27, 2011



NOTE: This is for assessment use only and does not represent a survey. No liability is assumed as to the accuracy of the data delineated herein. Use of this plat for other than assessment purposes is forbidden unless approved by the Lyon County Assessor's Office.

Dayton Valley Country Club Unit #2  
S.M. 138166 12/6/90  
Dayton Valley Country Club Unit #2B  
S.M. 151220 5/7/92

Dayton Valley Country Club Unit #2C  
S.M. 161360 5/30/93  
Dayton Valley Country Club Unit #2E  
S.M. 194108 6/6/96