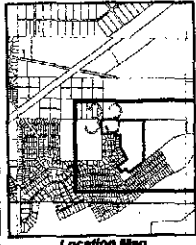
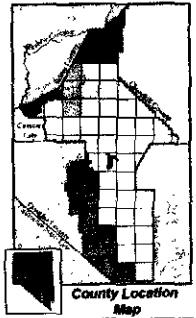
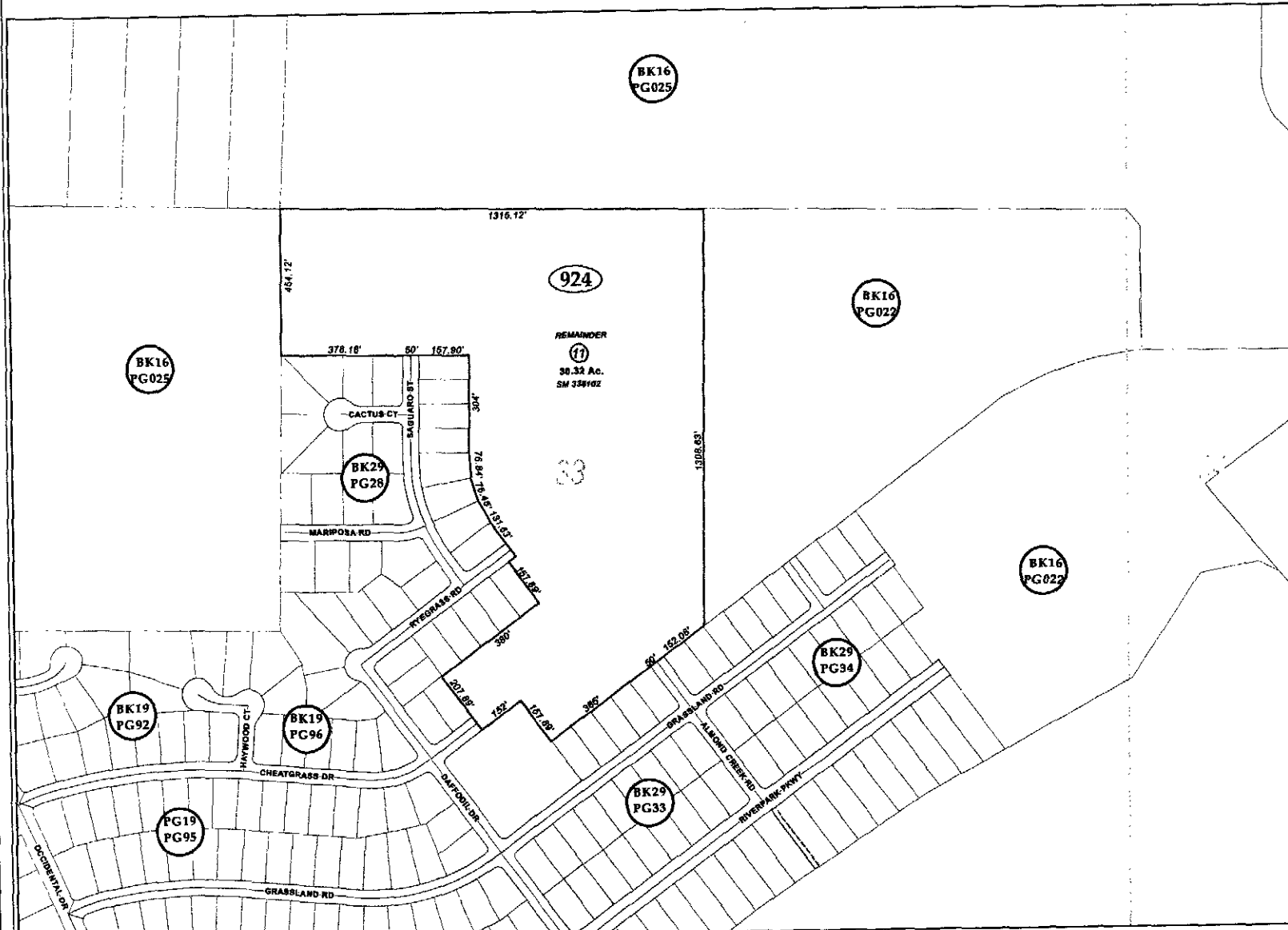


Portion S 1/2 Sections 33 & 34, T17N-R22E, MD&M

19-924



- Map Elements**
- 300' Dimensions
 - 1 Parcel Lot
 - ① Parcel Number
 - 0.13 Ac. Acreage of Parcel
 - PM 128149 Recorded Map Image
 - ▭ Parcel Boundaries
 - Ⓚ Stock Number
 - Ⓚ BK16 PG025 Parcel Book & Page Number
 - Ⓚ PG024 Page Number
- Cities & Townships**
- Dayton
 - Dayton Valley
 - Farmley
 - North Valley
 - Shannon Valley
 - Mountaineer
 - Silver City
 - Shaw's Bluff
 - Smith Valley
 - Stephens
 - Yelverton

Scale: 1" = 300'
Revised: October 25, 2005



NOTE: This is for assessment use only and does not represent a survey. No liability is assumed as to the accuracy of the data delineated herein. Use of this plat for other than assessment purposes is forbidden unless approved by the Lyon County Assessor's Office.