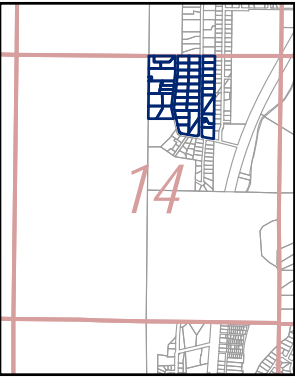
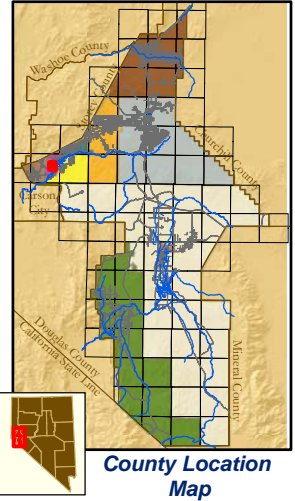
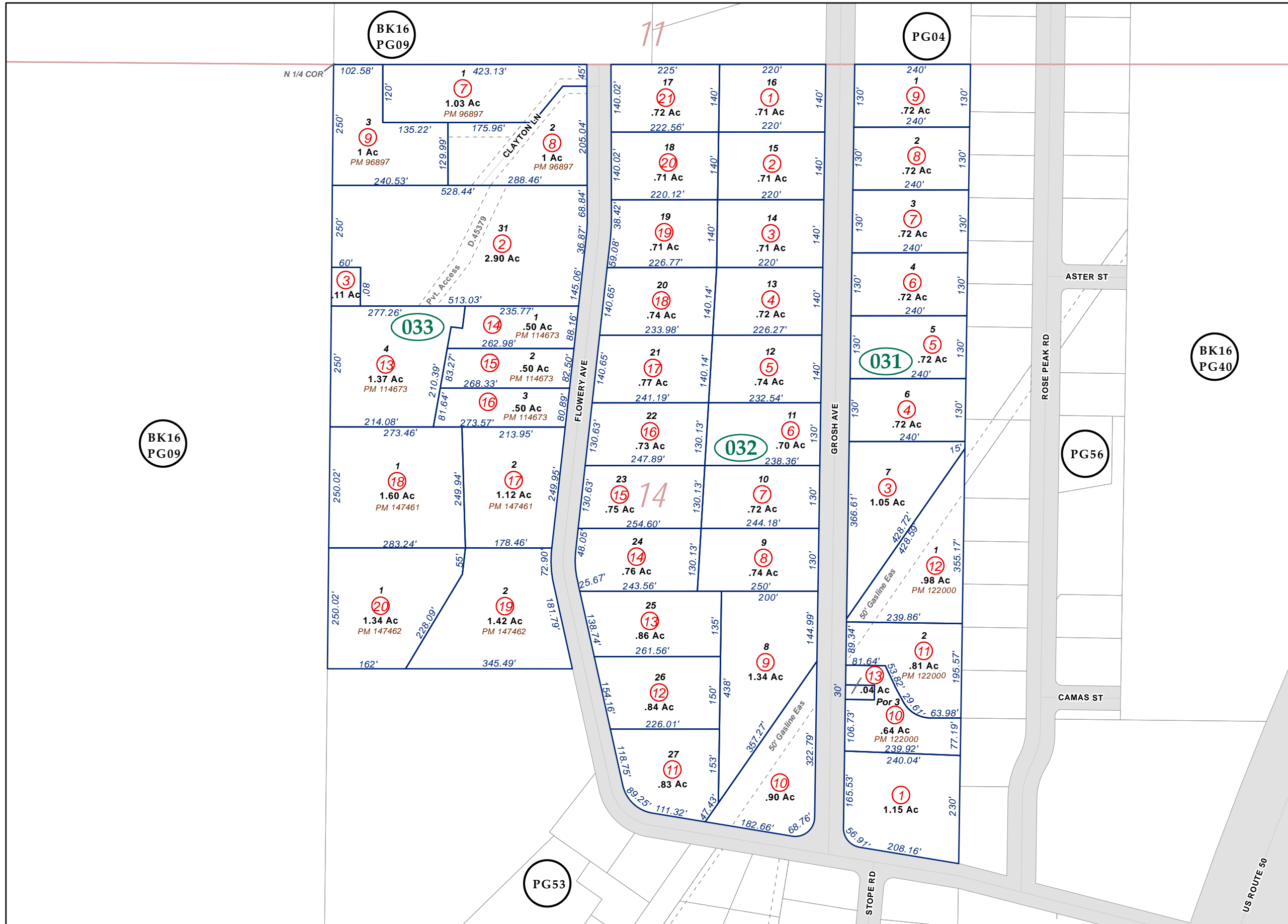


Por W1/2 NE1/4 Section 14 T16N-R21E, MD&M

19-03



- ### Map Elements
- ✱ 1/4 Corner Section
 - * Section Ties
 - 300' Dimensions
 - 1 Parcel Lot
 - ③ Parcel Number
 - 0.13 Ac. Acreage of Parcel
 - PM 136149 Recorded Map Image
 - Parcel Boundaries
 - ④11 Block Number
 - ⓀⓂⓂⓂ Parcel Book & Page Number
 - ⓂⓂⓂⓂ Page Number
- ### Cities & Townships
- Dayton
 - Dayton Valley
 - Fernley
 - Mark Twain
 - Mason Valley
 - Mound House
 - Silver City
 - Silver Springs
 - Smith Valley
 - Stagecoach
 - Yerington

Scale: 1" = 200'
Revised: January 21, 2011

NOTE: This is for assessment use only and does not represent a survey. No liability is assumed as to the accuracy of the data delineated hereon. Use of this plat for other than assessment purposes is forbidden unless approved by the Lyon County Assessor's Office.

Rose Peak Subdivision
S.M. 06128 4/5/71