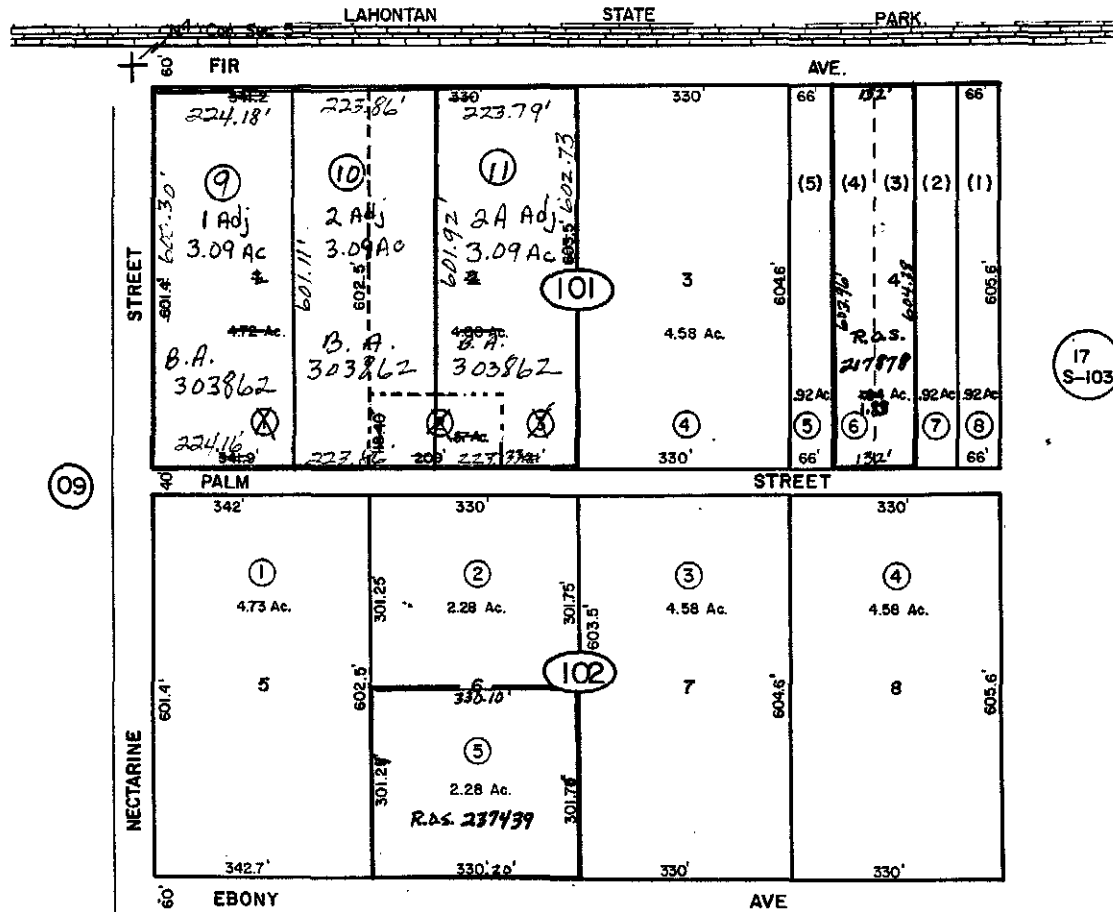


NW⁴ NE⁴ Section 5, T17N-R25E, M.D.B.8M.

17-10

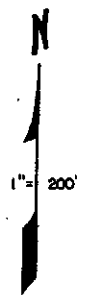
BK.15 PG.28



NOTE: Lot 4 has been divided into 5 lots.

09

17 S-103



DOT/DOAS/AUG. 78/DL

17 S-103

NOTE: This plat is for assessment use only and does not represent a survey. No liability is assumed as to the accuracy of the data delineated hereon. Use of this plat for other than assessment purposes is forbidden unless approved by the Lyon County Assessor's Office.

S.M. 71642 10/05/58

Steel Subdivision
LYON COUNTY