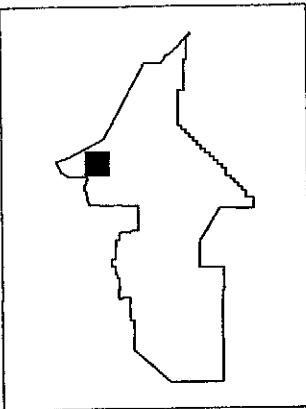
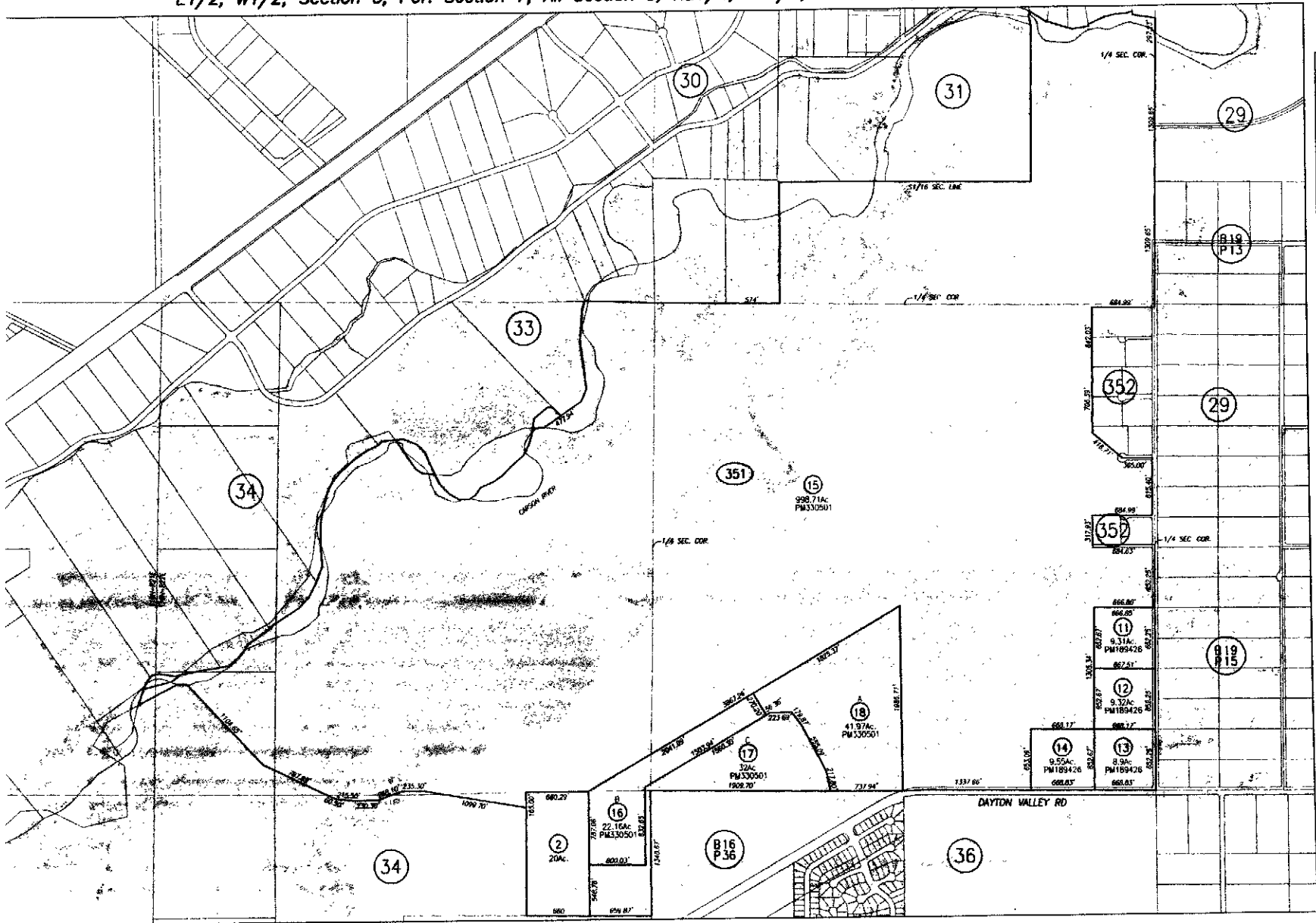
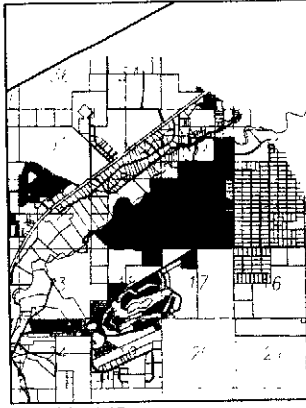


E1/2, W1/2, Section 5; Por. Section 7; All Section 8, NE1/4, NE1/4, Section 18, T16N, R22E, MDB&M

16-35



COUNTY LOCATION MAP



LOCATION MAP



SCALE: 1" = 1000'
REVISED: September 16, 2004

NOTE: This plot is for assessment use only and does not represent a survey. No liability is assumed as to the accuracy of the data delineated hereon. Use of this plot for other than assessment purposes is forbidden unless approved by the Lyon County Assessor's Office.

LYON COUNTY