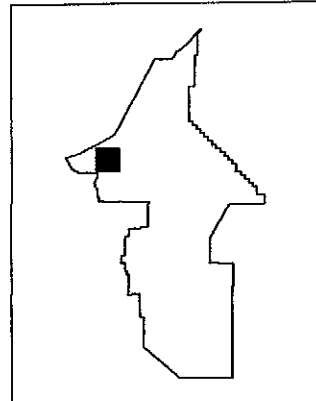
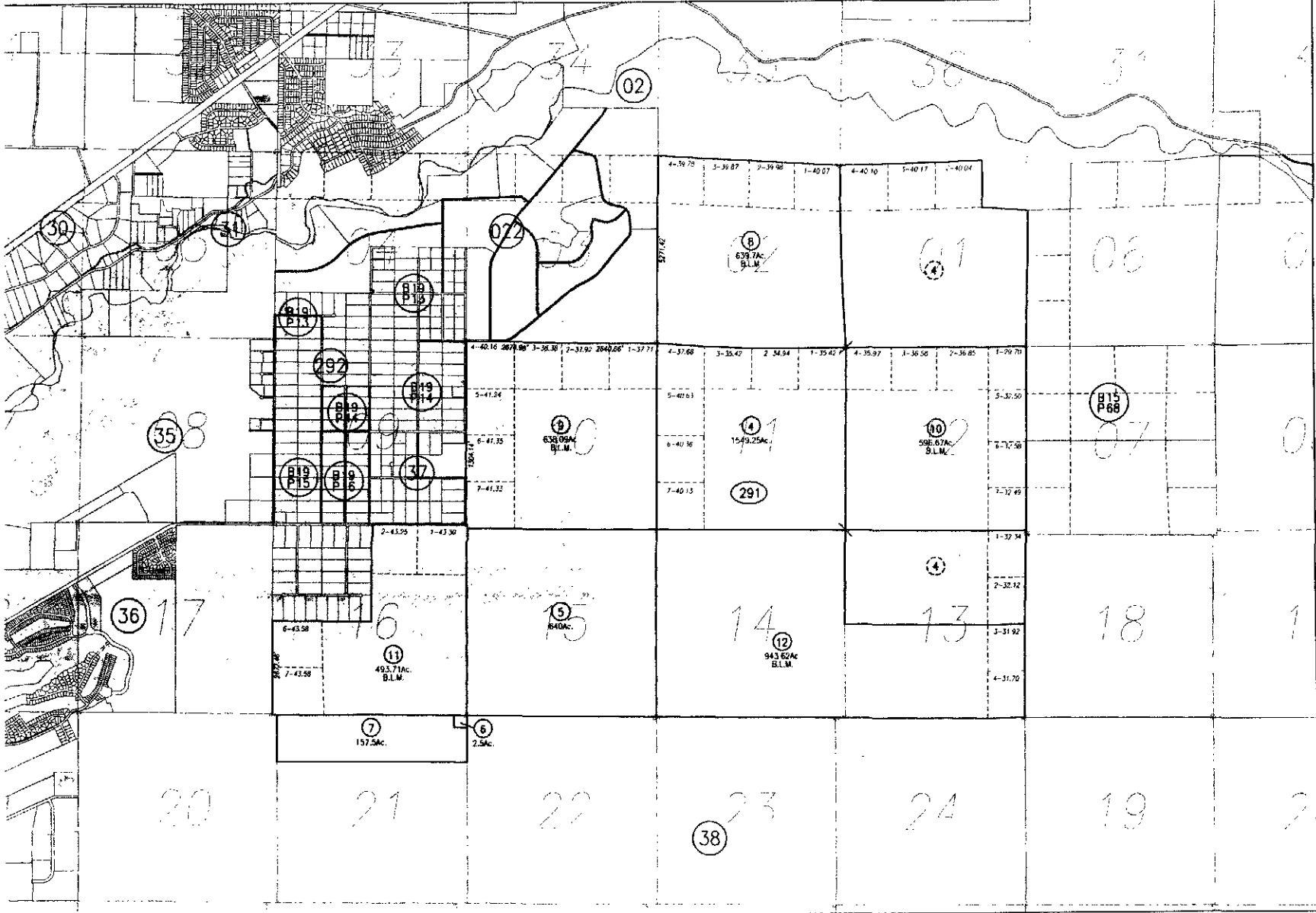
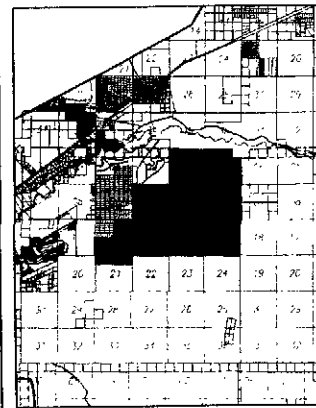


N1/2, T16N, R22E, MDB&M



COUNTY LOCATION MAP



LOCATION MAP



SCALE: 2" = 1mile  
 REVISED: September 27, 2004

NOTE: This plat is for assessment use only and does not represent a survey. No liability is assumed as to the accuracy of the data delineated herein. Use of this plat for other than assessment purposes is forbidden unless approved by the Lyon County Assessor's Office.

LYON COUNTY