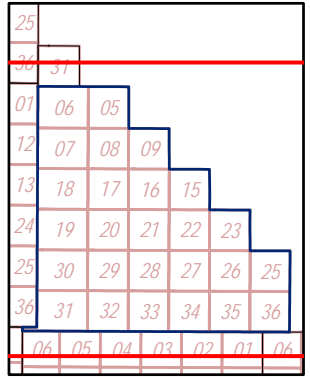
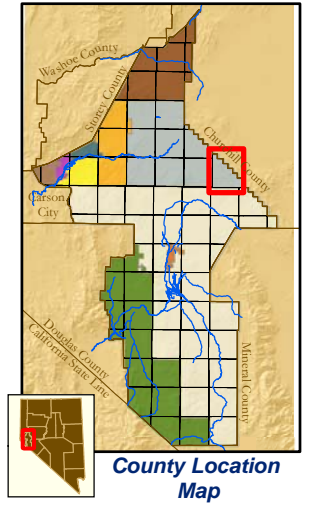
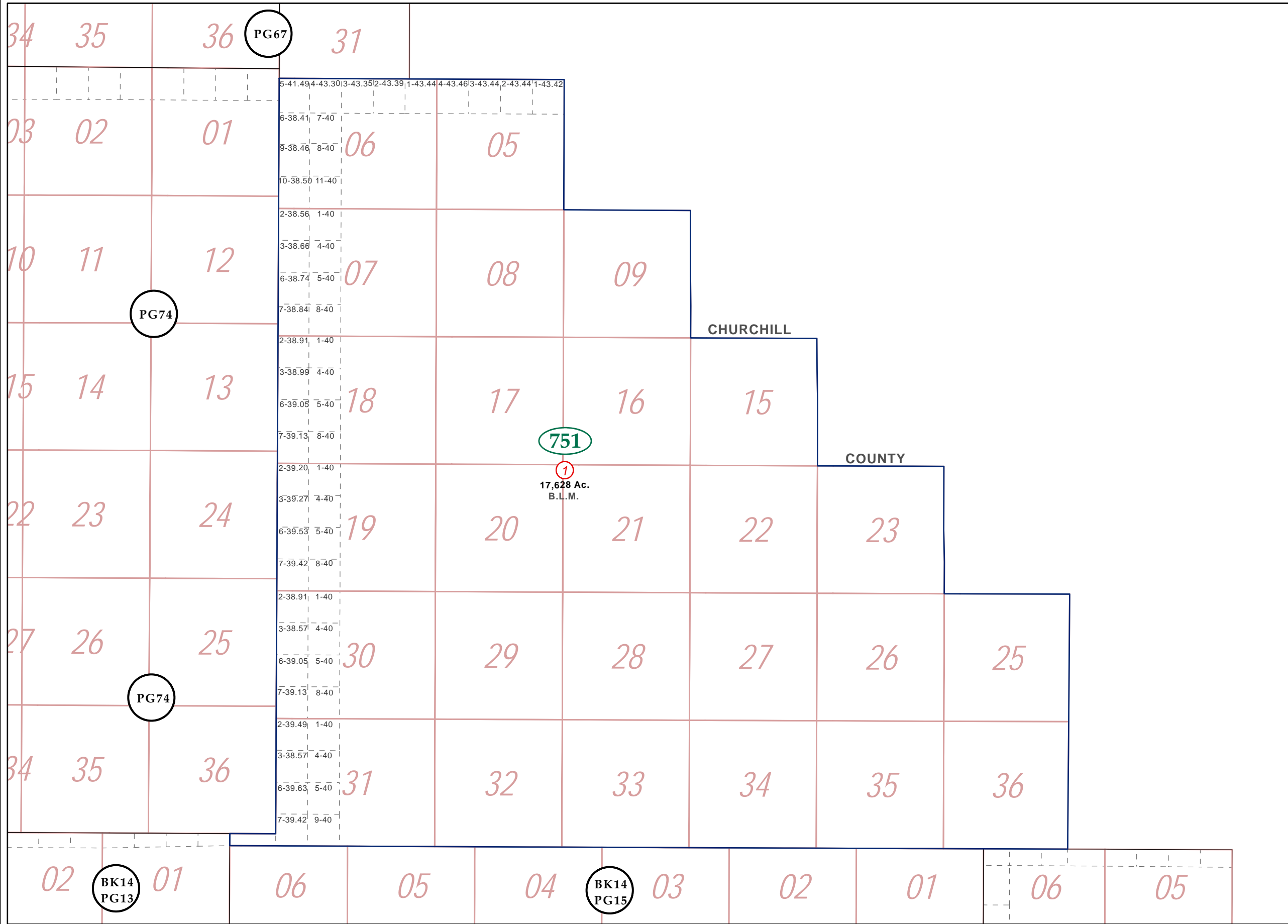


T16N - R27E, MD&M

15-75



Map Elements

- ✕ 1/4 Corner Section
- * Section Ties
- 300' Dimensions
- 1 Parcel Lot
- ① Parcel Number
- ③ Parcel Number
- 0.13 Ac. Acreage of Parcel
- PM 136149 Recorded Map Image
- Parcel Boundaries
- 411 Block Number
- BK14 PG06 Parcel Book & Page Number
- PG24 Page Number

Cities & Townships

- Dayton
- Dayton Valley
- Fernley
- Mark Twain
- Mason Valley
- Mound House
- Silver City
- Silver Springs
- Smith Valley
- Stagecoach
- Yerington

Scale: 11/2" = 1 Mile
 Revised: May 14, 2008

The logo for Lyon County is shown, along with a compass rose indicating North (N), South (S), East (E), and West (W).

NOTE: This is for assessment use only and does not represent a survey. No liability is assumed as to the accuracy of the data delineated hereon. Use of this plat for other than assessment purposes is forbidden unless approved by the Lyon County Assessor's Office.