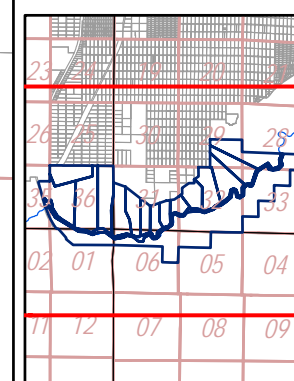
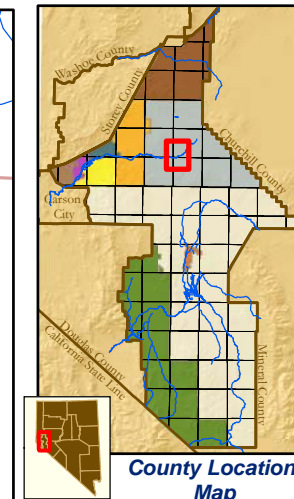
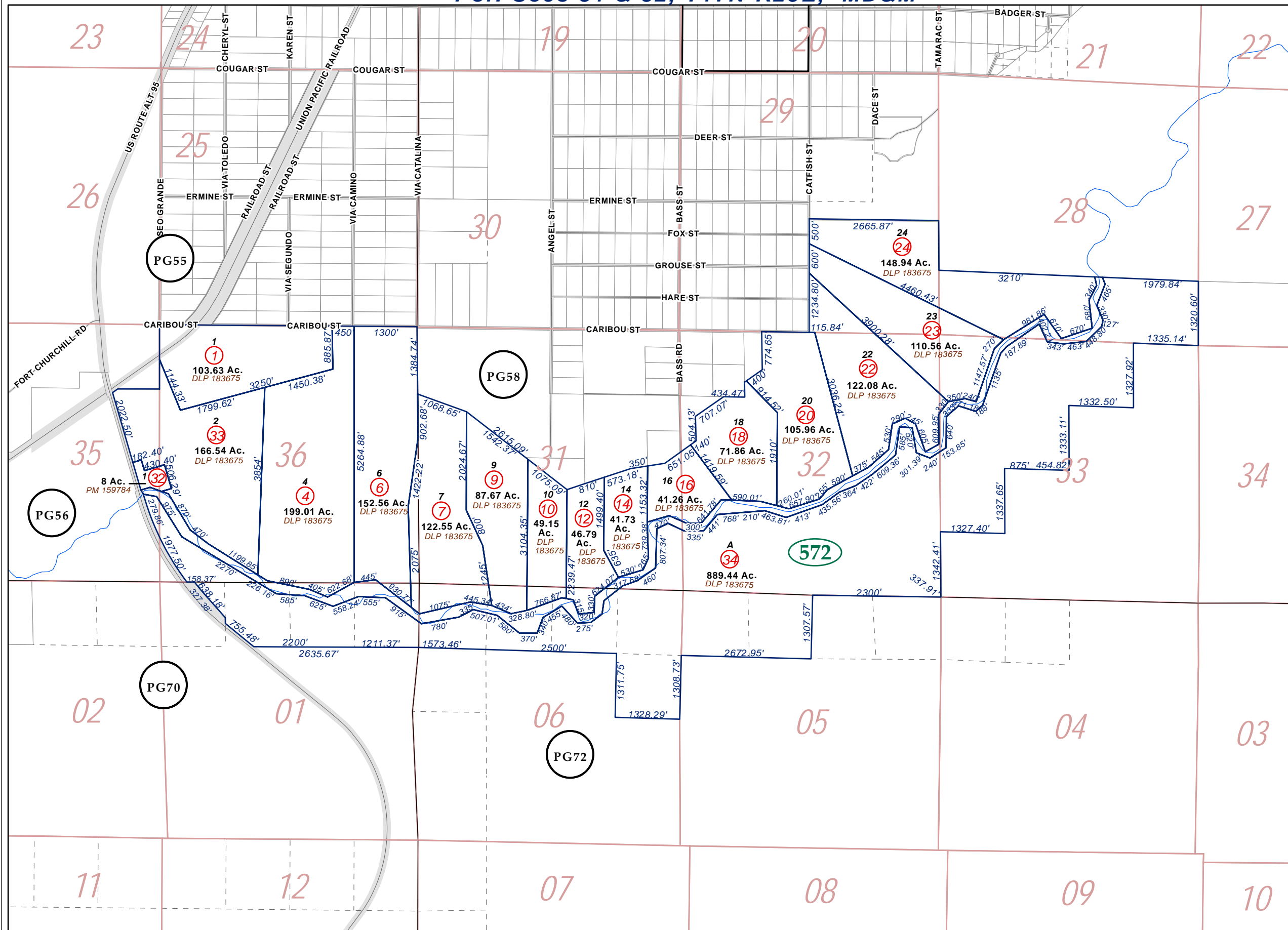


Por. Sec. 1, T16N-R24E; Por. Sec. 5 & 6, T16N-R25E; Por. Sec. 35 & All Sec. 36, T17N-R24E  
 Por. Secs 31 & 32, T17N-R25E, MD&M

15-572



Location Map

- Map Elements**
- 1/4 Corner Section
  - Section Ties
  - 300' Dimensions
  - Parcel Lot
  - Parcel Number
  - 0.13 Ac. Acreage of Parcel
  - PM 136149 Recorded Map Image
  - Parcel Boundaries
  - Block Number (411)
  - Parcel Book & Page Number (BK12 PG06)
  - Page Number (PG24)

- Cities & Townships**
- Dayton
  - Dayton Valley
  - Fernley
  - Mark Twain
  - Mason Valley
  - Mound House
  - Silver City
  - Silver Springs
  - Smith Valley
  - Stagecoach
  - Yerington

Scale: 1" = 2000'  
 Revised: July 3, 2008

North arrow pointing up, with 'N', 'S', 'E', 'W' labels. Below it is the Lyon County logo.

NOTE: This is for assessment use only and does not represent a survey. No liability is assumed as to the accuracy of the data delineated hereon. Use of this plat for other than assessment purposes is forbidden unless approved by the Lyon County Assessor's Office.