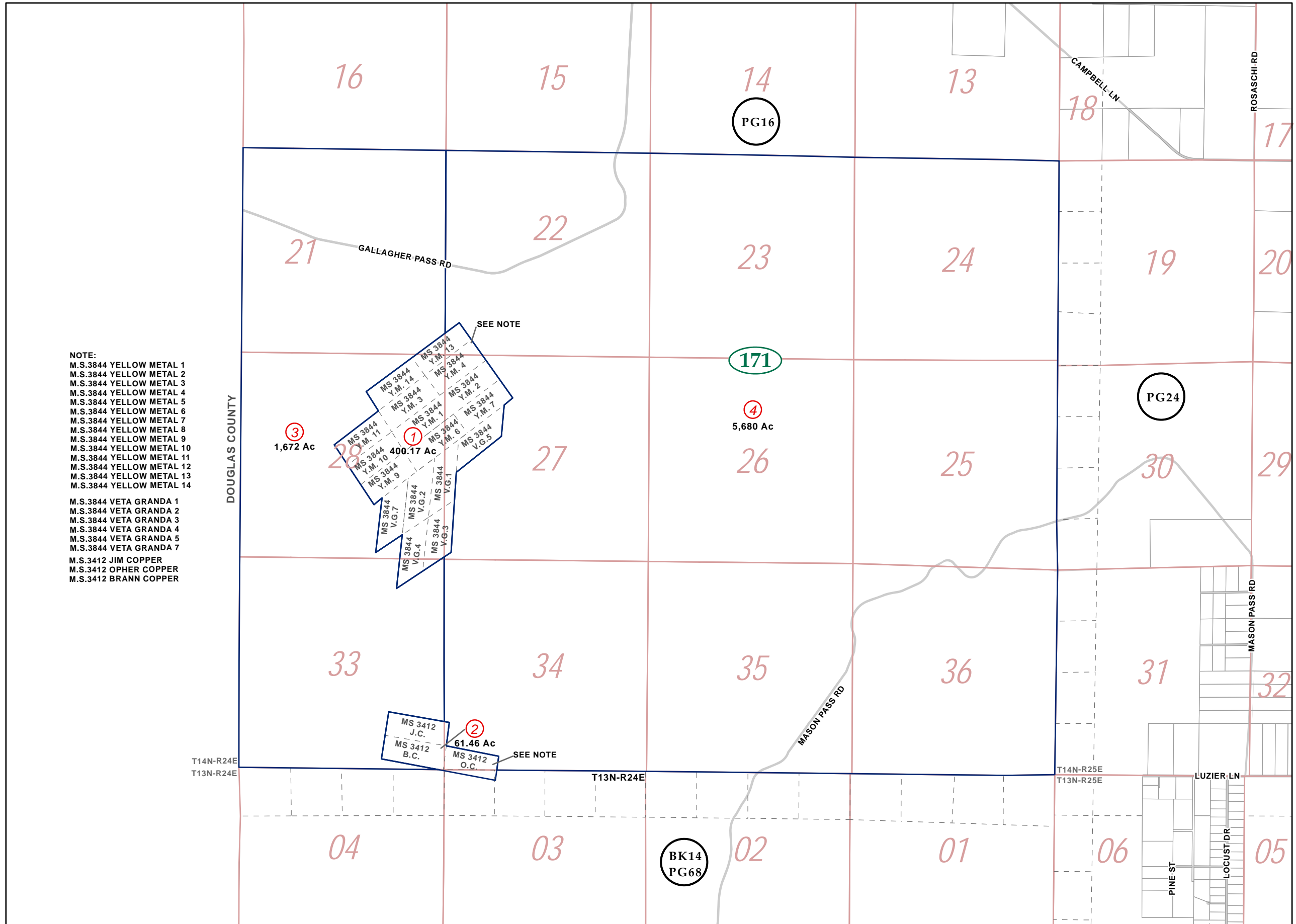
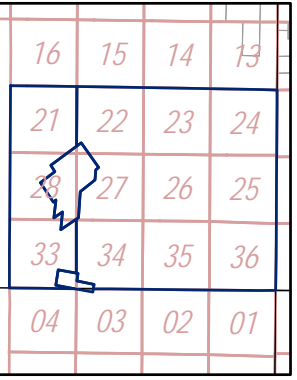
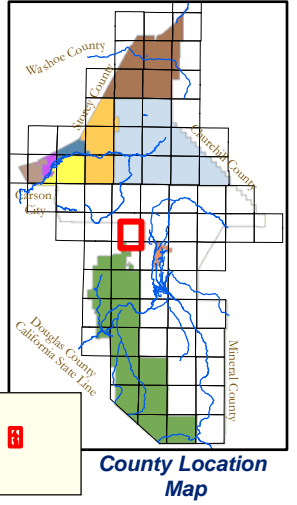


Portion of S1/2 T14N - R24E MD&M

14-17



- NOTE:
- M.S.3844 YELLOW METAL 1
  - M.S.3844 YELLOW METAL 2
  - M.S.3844 YELLOW METAL 3
  - M.S.3844 YELLOW METAL 4
  - M.S.3844 YELLOW METAL 5
  - M.S.3844 YELLOW METAL 6
  - M.S.3844 YELLOW METAL 7
  - M.S.3844 YELLOW METAL 8
  - M.S.3844 YELLOW METAL 9
  - M.S.3844 YELLOW METAL 10
  - M.S.3844 YELLOW METAL 11
  - M.S.3844 YELLOW METAL 12
  - M.S.3844 YELLOW METAL 13
  - M.S.3844 YELLOW METAL 14
  - M.S.3844 VETA GRANDA 1
  - M.S.3844 VETA GRANDA 2
  - M.S.3844 VETA GRANDA 3
  - M.S.3844 VETA GRANDA 4
  - M.S.3844 VETA GRANDA 5
  - M.S.3844 VETA GRANDA 7
  - M.S.3412 JIM COPPER
  - M.S.3412 OPHER COPPER
  - M.S.3412 BRANN COPPER



- Map Elements
- ✦ 1/4 Corner Section
  - \* Section Ties
  - 300' Dimensions
  - 1 Parcel Lot
  - ③ Parcel Number
  - 0.13 Ac. Acreage of Parcel
  - PM 136149 Recorded Map Image
  - ▭ Parcel Boundaries
  - ④11 Block Number
  - Ⓚ12 PG06 Parcel Book & Page Number
  - Ⓚ24 Page Number
- Cities & Townships
- Dayton
  - Dayton Valley
  - Fernley
  - Mark Twain
  - Mason Valley
  - Mound House
  - Silver City
  - Silver Springs
  - Smith Valley
  - Stagecoach
  - Yerington

Scale: 2" = 1 Mile  
 Revised: September 20, 2012

NOTE: This is for assessment use only and does not represent a survey. No liability is assumed as to the accuracy of the data delineated hereon. Use of this plat for other than assessment purposes is forbidden unless approved by the Lyon County Assessor's Office.