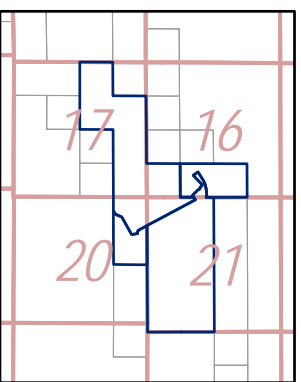
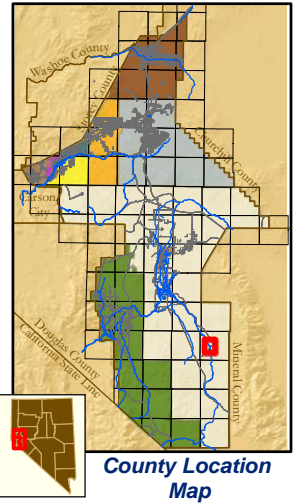
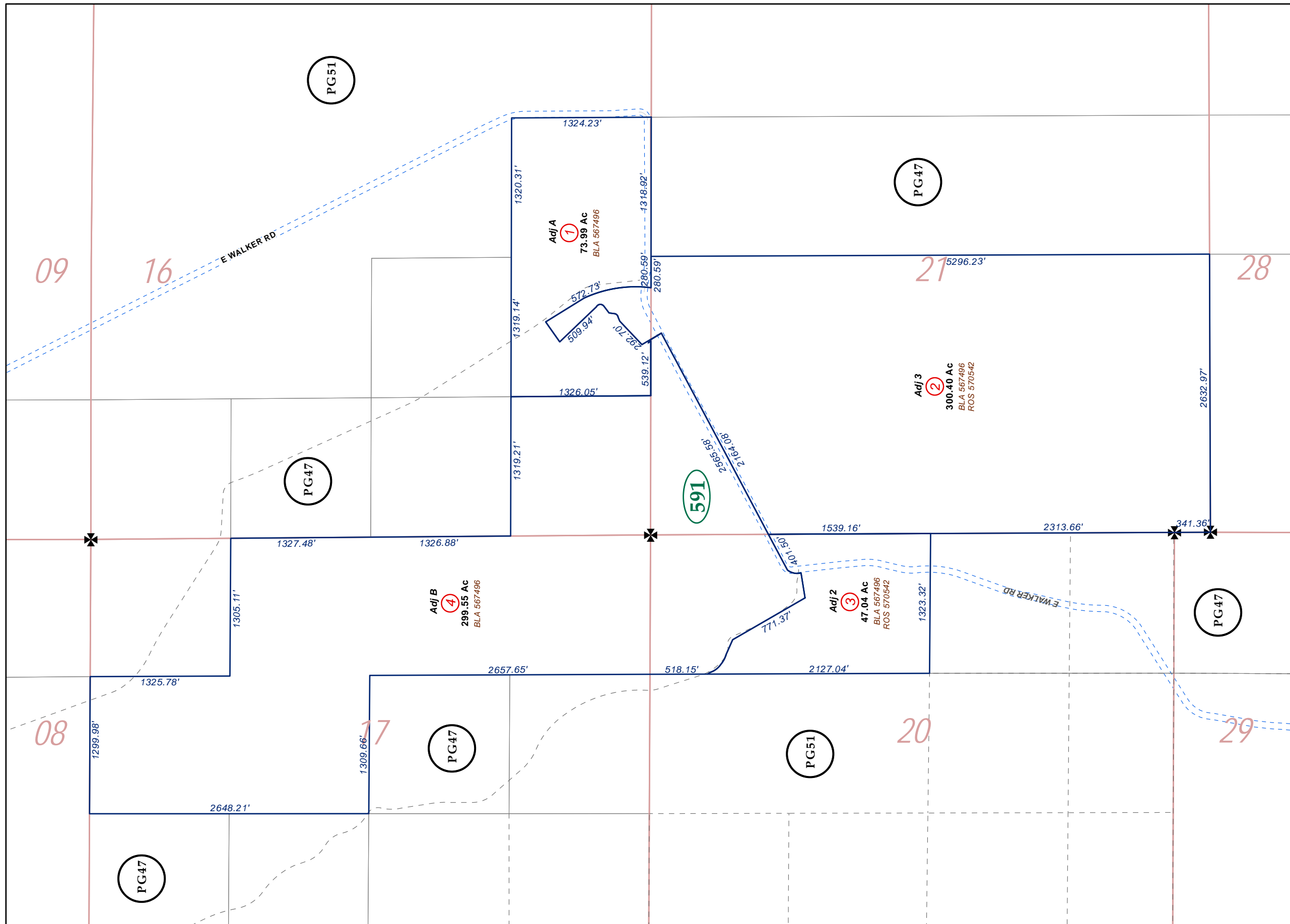


Por Sections 16, 17, 20 & 21 T10N-R27E, MD&M

12-59



**Map Elements**

- ✦ 1/4 Corner Section
- \* Section Ties
- 300' Dimensions
- 1 Parcel Lot
- ③ Parcel Number
- 0.13 Ac. Acreage of Parcel
- PM 136149 Recorded Map Image
- Parcel Boundaries
- 411 Block Number
- BK12 PG06 Parcel Book & Page Number
- PG24 Page Number

**Cities & Townships**

- Dayton
- Dayton Valley
- Fernley
- Mark Twain
- Mason Valley
- Mound House
- Silver City
- Silver Springs
- Smith Valley
- Stagecoach
- Yerington

Scale: 1" = 1000'  
Revised: September 27, 2017



NOTE: This is for assessment use only and does not represent a survey. No liability is assumed as to the accuracy of the data delineated hereon. Use of this plat for other than assessment purposes is forbidden unless approved by the Lyon County Assessor's Office.

NOTE: Parcel boundaries along the river are subject to change as a result of reliction, accretion and/or avulsion, and may be subject to dispute based upon a survey changing the location of the river, or other changes in the river. This plat is for assessment purposes only and does not purport to establish ownership of disputed areas.