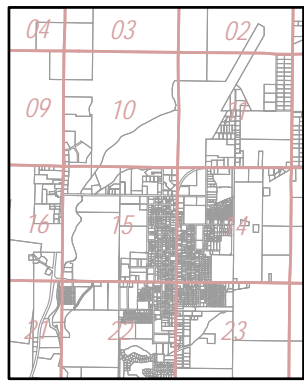
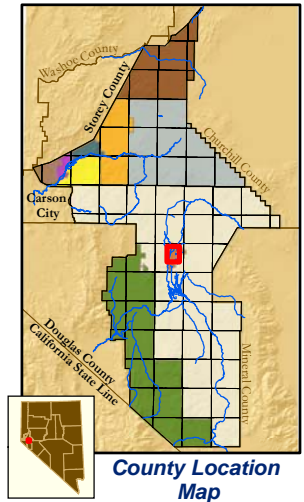


INDEX PATENTED MINING CLAIMS

12-112 CLAIMS

M.S.	CLAIM NAME	APN	M.S.	CLAIM NAME	APN	M.S.	CLAIM NAME	APN
3656	Alcatraz	12-112-01	3656	Santa Inez	12-112-01			
3656	Black Horse	12-112-01	3656	Santiago	12-112-01			
2985	Bloody Butcher	12-112-02	3656	Scorpion	12-112-01			
3656	Boston	12-112-01	3656	Styx	12-112-01			
3656	Cash Boy	12-112-01	4097	Summit	12-112-07			
3656	Christina	12-112-01	4097	Tilden	12-112-03			
3656	Colorado	12-112-01	4097	Tilden No. 1	12-112-04			
3656	Colorado Springs	12-112-01	2985	White Bird Gypsum	12-112-02			
3655	Copper Queen No. 1	12-112-01						
3656	Copper Queen No. 2	12-112-01						
3655	Copper Queen No. 3	12-112-01						
3656	Copper Queen No. 6	12-112-01						
3656	Daisy	12-112-01						
3656	Fortuna	12-112-01						
4097	Grand Prize	12-112-13						
2985	Hidden Treasure	12-112-02						
4097	Hilltop	12-112-11						
4097	Hilltop No. 1	12-112-10						
4097	Hilltop No. 2	12-112-14						
4097	Hilltop No. 4	12-112-09						
3656	Iron Cap	12-112-01						
3656	Iron Cap No. 2	12-112-01						
3656	Jack Clubs	12-112-01						
3656	Juanita	12-112-01						
3656	Kathleen	12-112-01						
4097	Lizzie	12-112-06						
4097	Mayflower	12-112-05						
3655	Minnie Edith	12-112-01						
3656	Monte Christo	12-112-01						
3655	Nevada King	12-112-01						
2985	North End	12-112-02						
2985	North End No. 2	12-112-02						
4097	Phoenix	12-112-08						
3656	Pocahontas	12-112-01						
2985	Red Top	12-112-02						
2985	Red Top Extension	12-112-02						
4097	Revenue	12-112-12						
2985	Rosland	12-112-02						
3656	Sage Hen	12-112-01						
3655	Santa Jacinto	12-112-01						



Map Elements

- ✦ 1/4 Corner Section
- ✱ Section Ties
- 300' Dimensions
- 1 Parcel Lot
- ③ Parcel Number
- 0.13 Ac. Acreage of Parcel
- PM 136149 Recorded Map Image
- ▭ Parcel Boundaries
- ④ Block Number
- Ⓚ Parcel Book & Page Number
- Ⓜ Page Number

Cities & Townships

- Dayton
- Dayton Valley
- Fernley
- Mark Twain
- Mason Valley
- Mound House
- Silver City
- Silver Springs
- Smith Valley
- Stagecoach
- Yerington

Revised: August 15, 2008



NOTE: This is for assessment use only and does not represent a survey. No liability is assumed as to the accuracy of the data delineated hereon. Use of this plat for other than assessment purposes is forbidden unless approved by the Lyon County Assessor's Office.