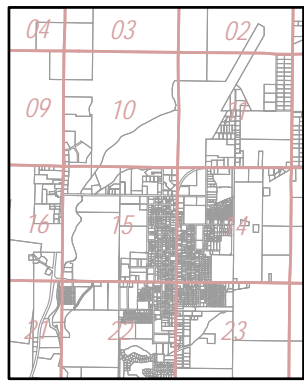
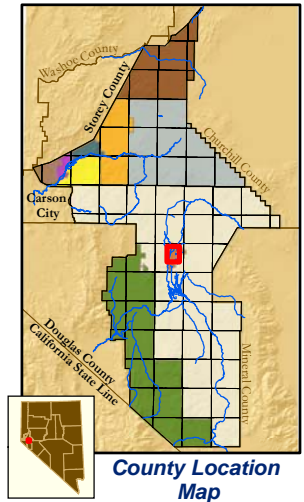


# INDEX PATENTED MINING CLAIMS

# 12-111 CLAIMS

M.S.	CLAIM NAME	APN	M.S.	CLAIM NAME	APN	M.S.	CLAIM NAME	APN
2913	Alameda	12-111-02	3044	Excelsior No. 3	12-111-09	4545	Star	12-111-09
4545	Anaconda	12-111-09	3044	Excelsior No. 4	12-111-09	2990	Texas	12-111-02
4492	Atlanta	12-111-02	3044	Excelsior No. 5	12-111-09	2990	Utah	12-111-02
2704	Bachelor No. 1	12-111-13	3693	Extension	12-111-24	4545	Valley View	12-111-09
2704	Bachelor No. 2	12-111-14	3157	Hazel	12-111-12	2990	Vermont	12-111-02
2704	Bachelor No. 3	12-111-14	2913	Itasca	12-111-02	2704	Wedge Fraction	12-111-12
2704	Bachelor No. 4	12-111-13	3145	January	12-111-21	2913	Winona	12-111-02
2704	Bachelor No. 5	12-111-14	2913	July	12-111-02	2704	Wonder Fraction	12-111-14
2704	Bachelor No. 6	12-111-12	3375	July Fraction	12-111-07	2913	Yellowstone	12-111-02
4493	Belmont	12-111-02	2990	June	12-111-02			
3375	Blue Excel	12-111-07	3157	Jupiter	12-111-12			
3376	Blue Excel No. 1	12-111-07	4081	Kid	12-111-21			
3375	Blue Excel Fraction	12-111-07	3144	Know U Don't	12-111-21			
3376	Blue Excel Fraction No. 2	12-111-07	2990	Laura	12-111-02			
3337	Bluestone No. 1	12-111-02	3140	Lime Ridge Copper & Lime Claim	12-111-20			
4492	California	12-111-02	2797	Malachite	12-111-18			
2913	Chaska	12-111-02	2797	Malachite No. 1	12-111-15			
3157	Copper Age	12-111-06	3141	Malachite No. 2	12-111-17			
2717	Copper Chieftian	12-111-04	3141	Malachite No. 3	12-111-17			
2717	Copper Deposit	12-111-04	2797	Malachite Extension	12-111-15			
3157	Copper Glance	12-111-04	2797	Malachite Fraction	12-111-15			
3157	Copper Gulch	12-111-10	3097	Mason Valley Fraction	12-111-16			
3157	Copper Hill	12-111-05	2990	May	12-111-02			
3157	Copper King	12-111-05	3436	Miko	12-111-01			
4081	Copper King	12-111-21	2913	Minnehaha	12-111-02			
4081	Copper Queen No. 1	12-111-21	3144	Montgomery	12-111-19			
3157	Copper Ridge	12-111-05	3157	Morning Star	12-111-11			
3046	Cottonwood	12-111-16	2703	No U Don't	12-111-12			
3553	Dewey George	12-111-03	3044	North Excelsior	12-111-07			
3814	Dipper	12-111-22	3375	North Excelsior Fraction	12-111-07			
2703	Dodge	12-111-12	3157	North Star Fraction	12-111-12			
2913	Dora	12-111-02	4492	October	12-111-02			
4080	Eclipse	12-111-21	2990	Ohio	12-111-02			
4080	Edwin No. 1	12-111-21	3144	Plumbum	12-111-19			
4080	Edwin No. 2	12-111-21	2913	Ridge	12-111-02			
4081	Edwin No. 3	12-111-08	3367	Rossland	12-111-21			
4080	Edwin No. 5	12-111-21	2913	St. Cloud	12-111-02			
2990	Ella	12-111-02	3075	Santa Cruse No. 1	12-111-23			
3044	Excelsior	12-111-09	3075	Santa Cruse No. 3	12-111-23			
3044	Excelsior No. 2	12-111-09	3075	Santa Cruz	12-111-23			



**Map Elements**

- ✦ 1/4 Corner Section
- ✱ Section Ties
- 300' Dimensions
- 1 Parcel Lot
- ③ Parcel Number
- 0.13 Ac. Acreage of Parcel
- PM 136149 Recorded Map Image
- ▭ Parcel Boundaries
- ④ Block Number
- SK12 PG06 Parcel Book & Page Number
- PG24 Page Number

**Cities & Townships**

- Dayton
- Dayton Valley
- Fernley
- Mark Twain
- Mason Valley
- Mound House
- Silver City
- Silver Springs
- Smith Valley
- Stagecoach
- Yerington

Revised: August 13, 2008



NOTE: This is for assessment use only and does not represent a survey. No liability is assumed as to the accuracy of the data delineated hereon. Use of this plat for other than assessment purposes is forbidden unless approved by the Lyon County Assessor's Office.