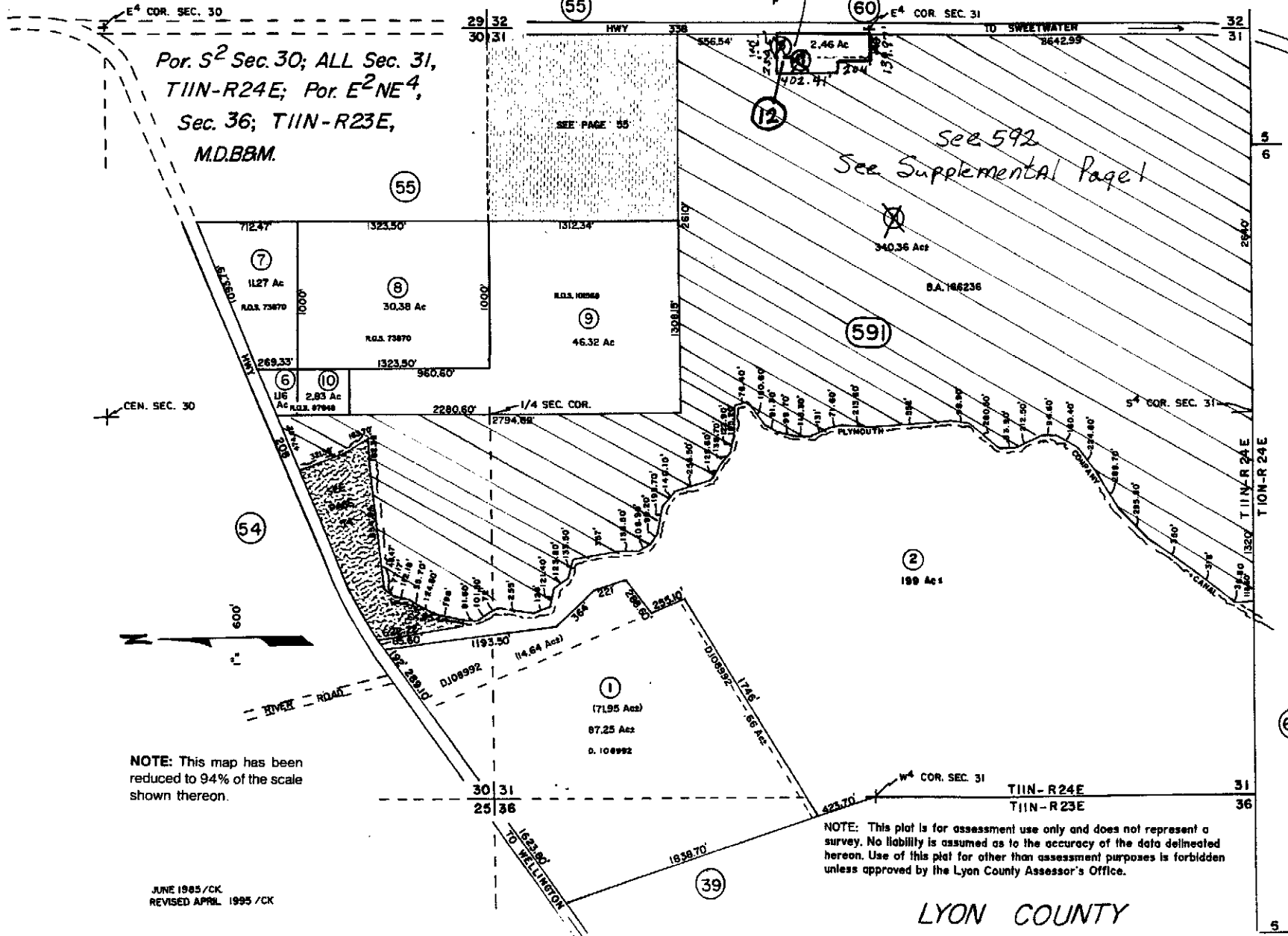


Por. S² Sec. 30; ALL Sec. 31,
T11N-R24E; Por. E²NE⁴,
Sec. 36; T11N-R23E,
M.D.B.M.

B.A. 307675

See 592
See Supplemental Page 1



NOTE: This map has been reduced to 94% of the scale shown thereon.

NOTE: This plat is for assessment use only and does not represent a survey. No liability is assumed as to the accuracy of the data delineated hereon. Use of this plat for other than assessment purposes is forbidden unless approved by the Lyon County Assessor's Office.

JUNE 1985 /CK
REVISED APRIL 1995 /CK

LYON COUNTY