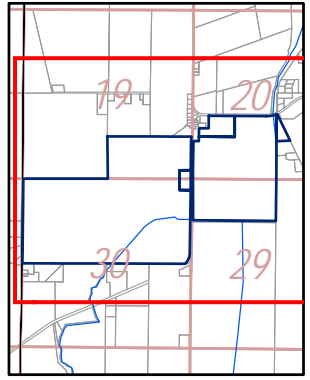
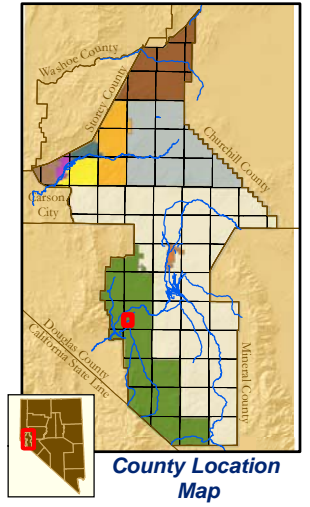
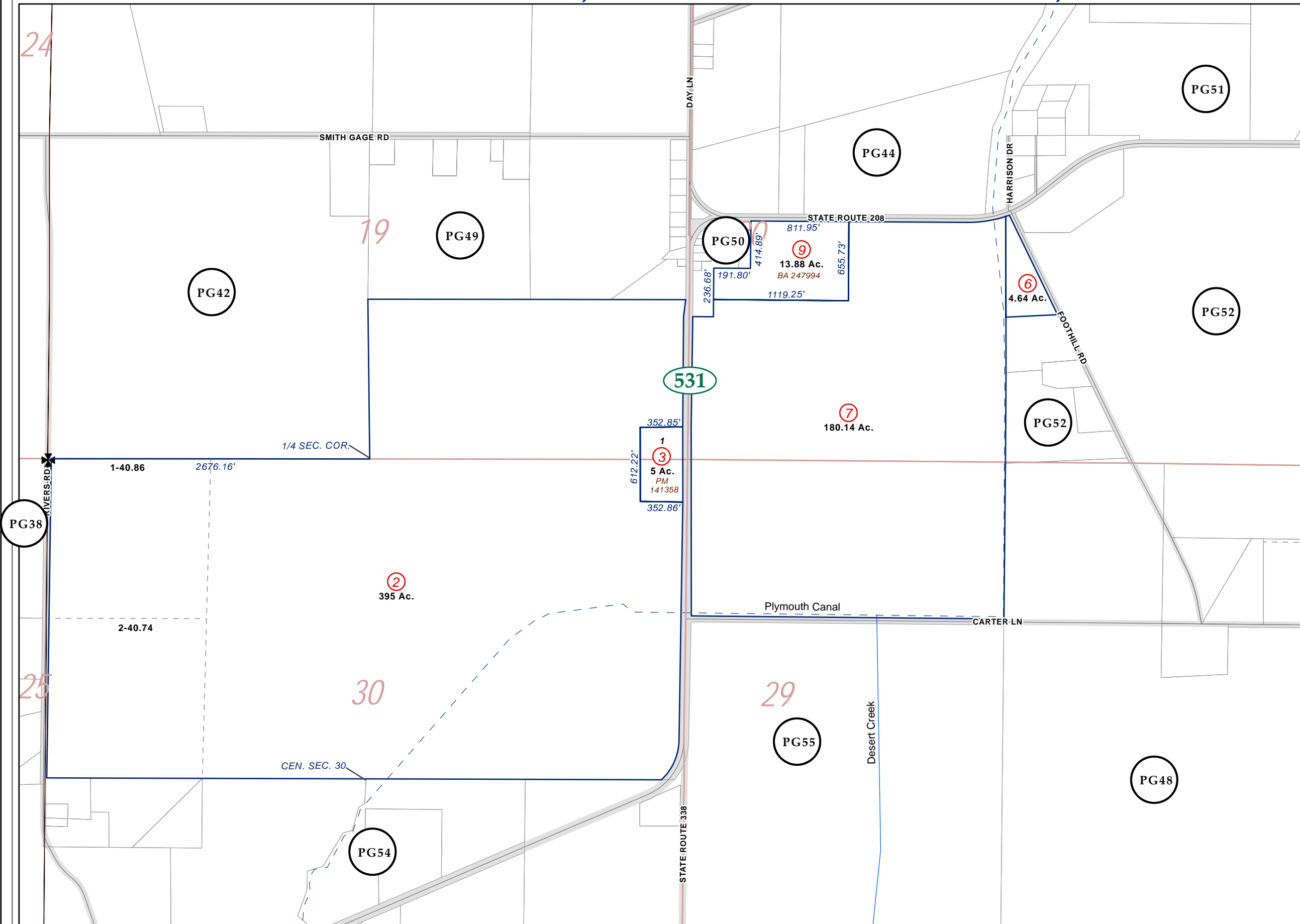


**Portion S1/2 SE1/4 Section 19; Portion W1/2 & SE1/4 Section 20;
Portion N1/2 NW1/4 Section 29 ; Portion N1/2 Section 30 T11N - R24E, MD&M**

10-53



Map Elements

- ✱ 1/4 Corner Section
- * Section Ties
- 300' Dimensions
- 1 Parcel Lot
- ③ Parcel Number
- 0.13 Ac. Acreage of Parcel
- PM 136149 Recorded Map Image
- ▭ Parcel Boundaries
- ④11 Block Number
- Ⓚ12 PG06 Parcel Book & Page Number
- Ⓚ24 Page Number

Cities & Townships

- Dayton
- Dayton Valley
- Fernley
- Mark Twain
- Mason Valley
- Mound House
- Silver City
- Silver Springs
- Smith Valley
- Stagecoach
- Yerington

Scale: 1" = 800'
Revisd: March 28, 2008

NOTE: This is for assessment use only and does not represent a survey. No liability is assumed as to the accuracy of the data delineated herein. Use of this plat for other than assessment purposes is forbidden unless approved by the Lyon County Assessor's Office.