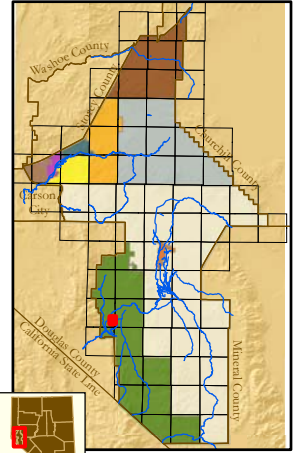
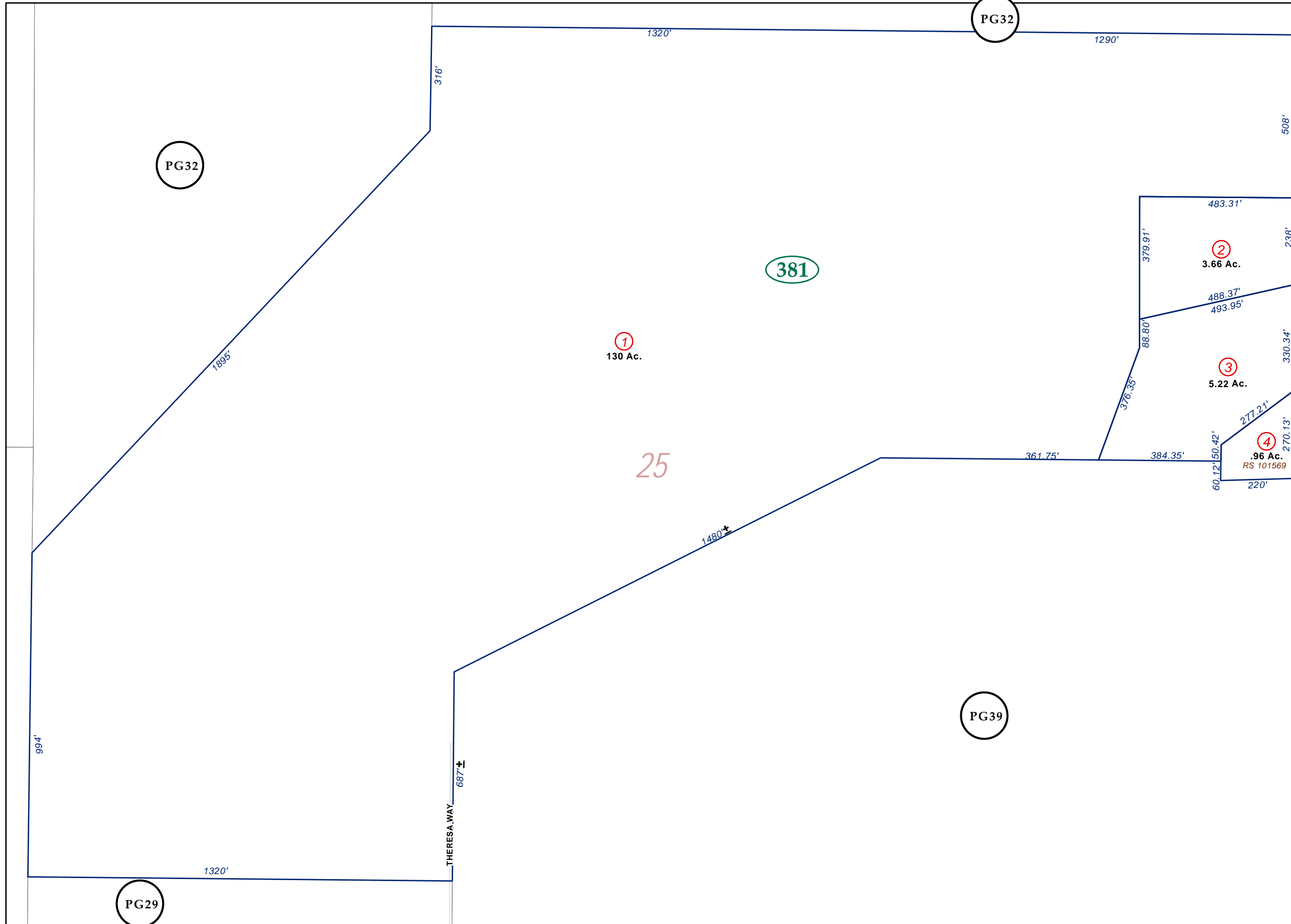
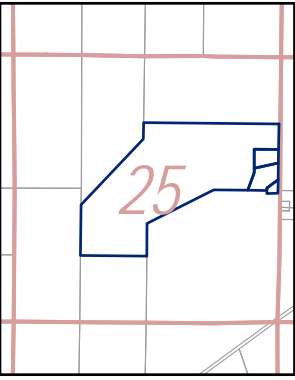


Portions SE1/4 NW1/4; NE1/4 SW1/4; N1/2 SE1/4; ALL S1/2 NE1/4 Section 25 T11N - R23E, MD&M

10-38



County Location Map



Location Map

Map Elements

- 1/4 Corner Section
- Section Ties
- 300' Dimensions
- 1 Parcel Lot
- Parcel Number
- 0.13 Ac. Acreage of Parcel
- PM 136149 Recorded Map Image
- Parcel Boundaries
- Block Number
- Parcel Book & Page Number
- Page Number

Cities & Townships

- Dayton
- Dayton Valley
- Fernley
- Mark Twain
- Mason Valley
- Mound House
- Silver City
- Silver Springs
- Smith Valley
- Stagecoach
- Yerington

Scale: 1" = 300'
Revised: October 3, 2013



NOTE: This is for assessment use only and does not represent a survey. No liability is assumed as to the accuracy of the data delineated hereon. Use of this plat for other than assessment purposes is forbidden unless approved by the Lyon County Assessor's Office.