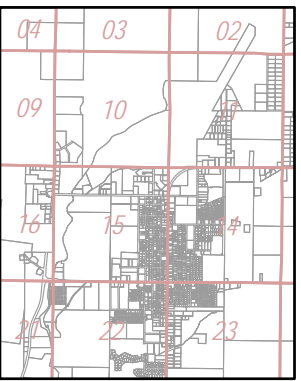
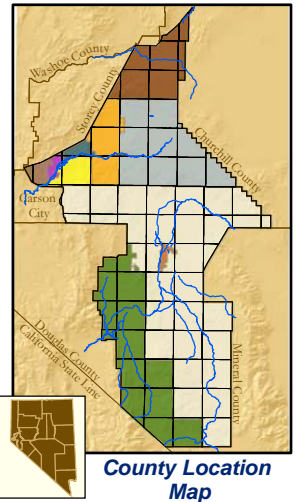


INDEX PATENTED MINING CLAIMS

10-04 CLAIMS

M.S. #	CLAIM NAME	A.P.N.	M.S. #	CLAIM NAME	A.P.N.
3179A	Amalgamated	10-041-21	1990	Hope	10-041-21
1990	Azurite Mine	10-041-21	3087	Iza	10-041-23
3179A	Black Copper	10-041-21	3087	Little Dick	10-041-23
3179A	Blister Copper	10-041-21	1990	Look Out Lode & Mine	10-041-21
3087	Blue Bell	10-041-23	1914	Ludwig Copper, Cobalt , Nickel	10-041-21
3179A	Bueno	10-041-21	3148	Michigan	10-041-21
2081	Casting Copper	10-041-21	1990	Morning Star Lode	10-041-21
3179A	Century Fraction	10-041-21	3179A	Native Copper	10-041-21
1990	Constitution	10-041-21	3179A	Nevada Copper	10-041-21
3148	Copper Hill	10-041-21	4759	Noonday	10-041-21
3087	Copper King	10-041-22	4759	Noonday Fraction	10-041-21
3179A	Copper Matte	10-041-21	3179A	Pure Copper	10-041-21
2081	Copper Oxide	10-041-21	1990	Relief	10-041-21
1990	Coppersmith	10-041-21	3087	Rose Bud	10-041-23
1990	Douglas Lode & Mine	10-041-21	2801	South Extension Ludwig	10-041-21
3179A	Electrolytic Copper	10-041-21	1990	Sunlight Mine	10-041-21
3087	El Paso	10-041-23			
3087	Emerald Hills	10-041-23			
3179A	Ex-Erie	10-041-21			
1990	Francis Lode & Mine	10-041-21			
3179A	Golconda	10-041-21			
1990	Golden Gate	10-041-21			
4759	Gypsum	10-041-21			
4759	Gypsum Extension	10-041-21			
3179A	Gypsum South Extension	10-041-21			
3087	Happy Thought	10-041-24			



Map Elements

- ✦ 1/4 Corner Section
- * Section Ties
- 300' Dimensions
- 1 Parcel Lot
- ③ Parcel Number
- 0.13 Ac. Acreage of Parcel
- PM 136149 Recorded Map Image
- ▭ Parcel Boundaries
- ④ Block Number
- SK12 PG06 Parcel Book & Page Number
- PG24 Page Number

Cities & Townships

- Dayton
- Dayton Valley
- Fernley
- Mark Twain
- Mason Valley
- Mound House
- Silver City
- Silver Springs
- Smith Valley
- Stagecoach
- Yerington

Revised: June 13, 2007



NOTE: This is for assessment use only and does not represent a survey. No liability is assumed as to the accuracy of the data delineated hereon. Use of this plat for other than assessment purposes is forbidden unless approved by the Lyon County Assessor's Office.