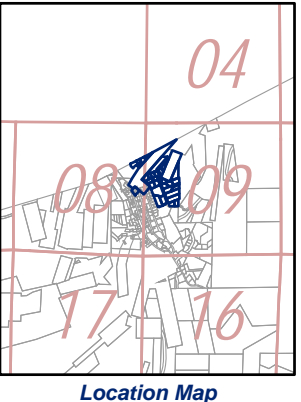
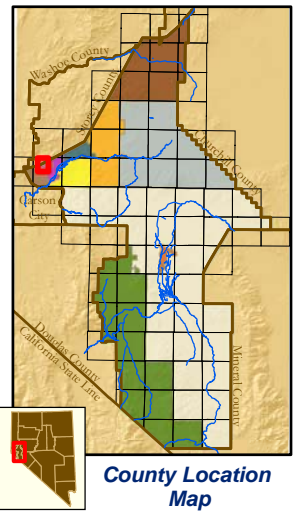
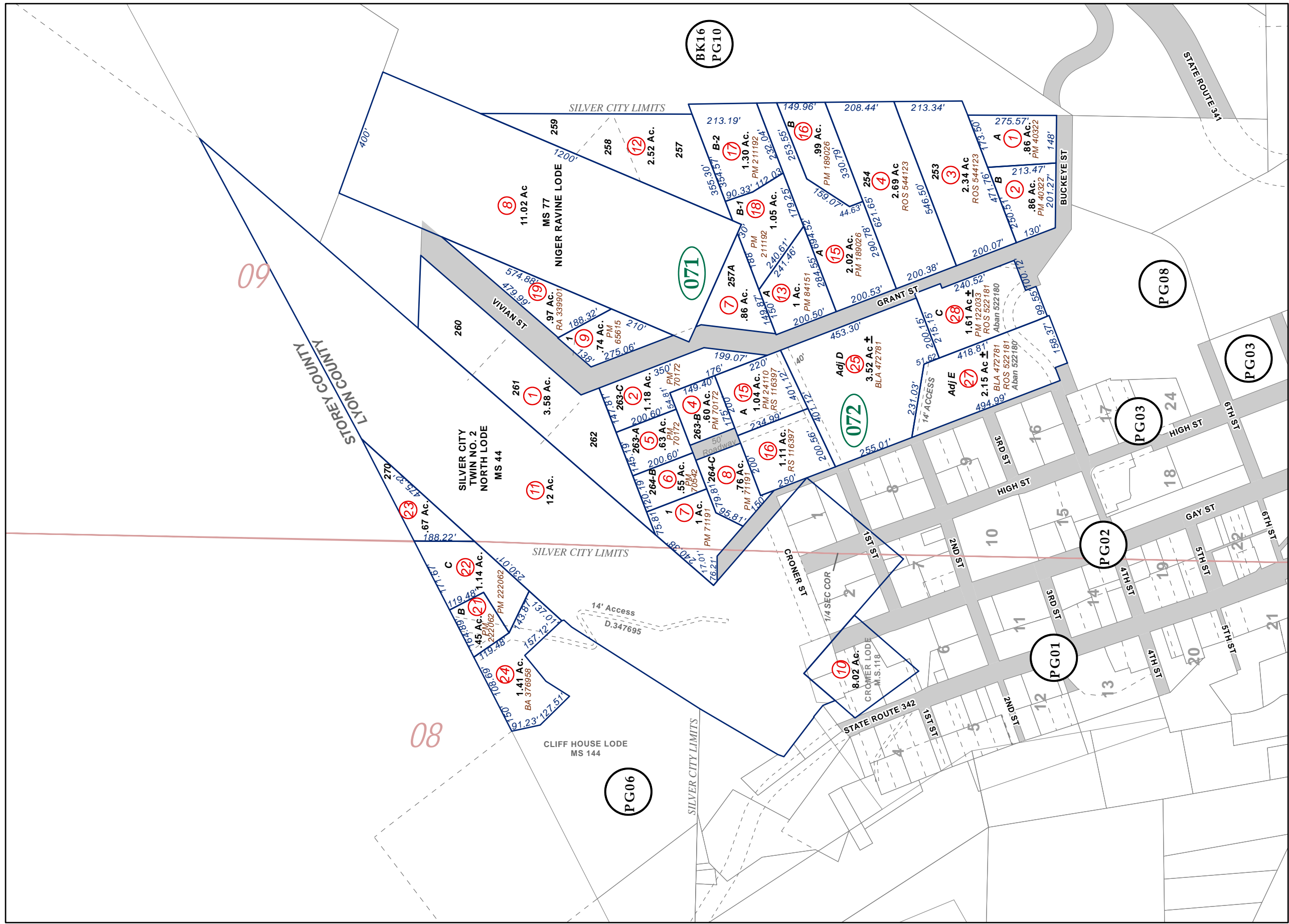


Portion E1/2 E 1/2, Section 8, Portion W1/2 W1/2, Section 9, T16N-R21E, MD&M

8-07



Map Elements

- ✕ 1/4 Corner Section
- * Section Ties
- 300' Dimensions
- 1 Parcel Lot
- ③ Parcel Number
- 0.13 Ac. Acreage of Parcel
- PM 136149 Recorded Map Image
- ▭ Parcel Boundaries
- ④ Block Number
- Ⓚ Parcel Book & Page Number
- Ⓜ Page Number

Cities & Townships

- Dayton
- Dayton Valley
- Fernley
- Mark Twain
- Mason Valley
- Mound House
- Silver City
- Silver Springs
- Smith Valley
- Stagecoach
- Yerington

Scale: 1" = 300'
Revised: November 30, 2015



NOTE: This is for assessment use only and does not represent a survey. No liability is assumed as to the accuracy of the data delineated hereon. Use of this plat for other than assessment purposes is forbidden unless approved by the Lyon County Assessor's Office.

ROS 513337 Rec 10/3/2013 (Road right of ways)

SILVER CITY