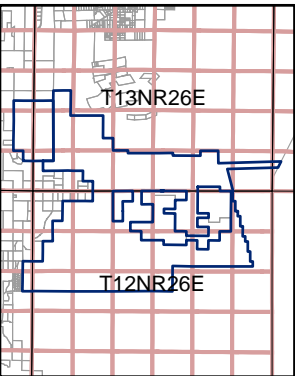
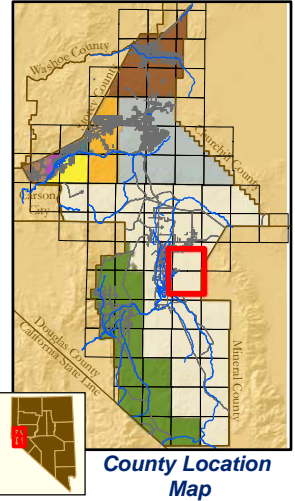
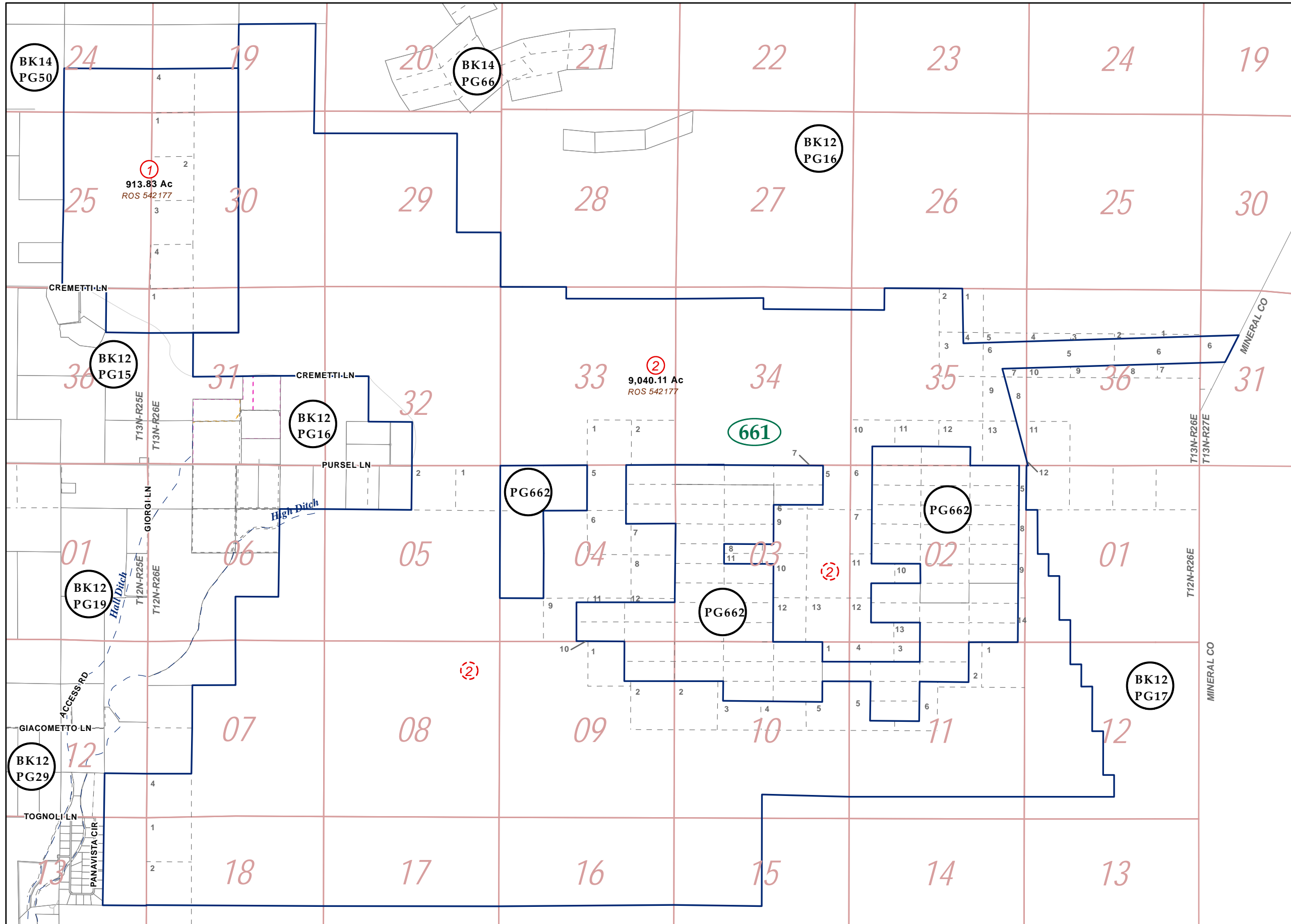


Por S1/2 T13N-R26E and Por N1/2 T12N-R26E, MD&M

1-66



Location Map

Map Elements

- ✱ 1/4 Corner Section
- * Section Ties
- 300' Dimensions
- 1 Parcel Lot
- ① Parcel Number
- ② Parcel Number
- 0.13 Ac. Acreage of Parcel
- PM 136149 Recorded Map Image
- ▭ Parcel Boundaries
- ④11 Block Number
- Ⓚ12 PG06 Parcel Book & Page Number
- Ⓚ24 Page Number

Cities & Townships

- Dayton
- Dayton Valley
- Fernley
- Mark Twain
- Mason Valley
- Mound House
- Silver City
- Silver Springs
- Smith Valley
- Stagecoach
- Yerington

Scale: 1 3/4" = 1 mile
Revised: February 24, 2016



NOTE: This is for assessment use only and does not represent a survey. No liability is assumed as to the accuracy of the data delineated herein. Use of this plat for other than assessment purposes is forbidden unless approved by the Lyon County Assessor's Office.

Note: For more detail on government lots, see BLM Master Title Plats.