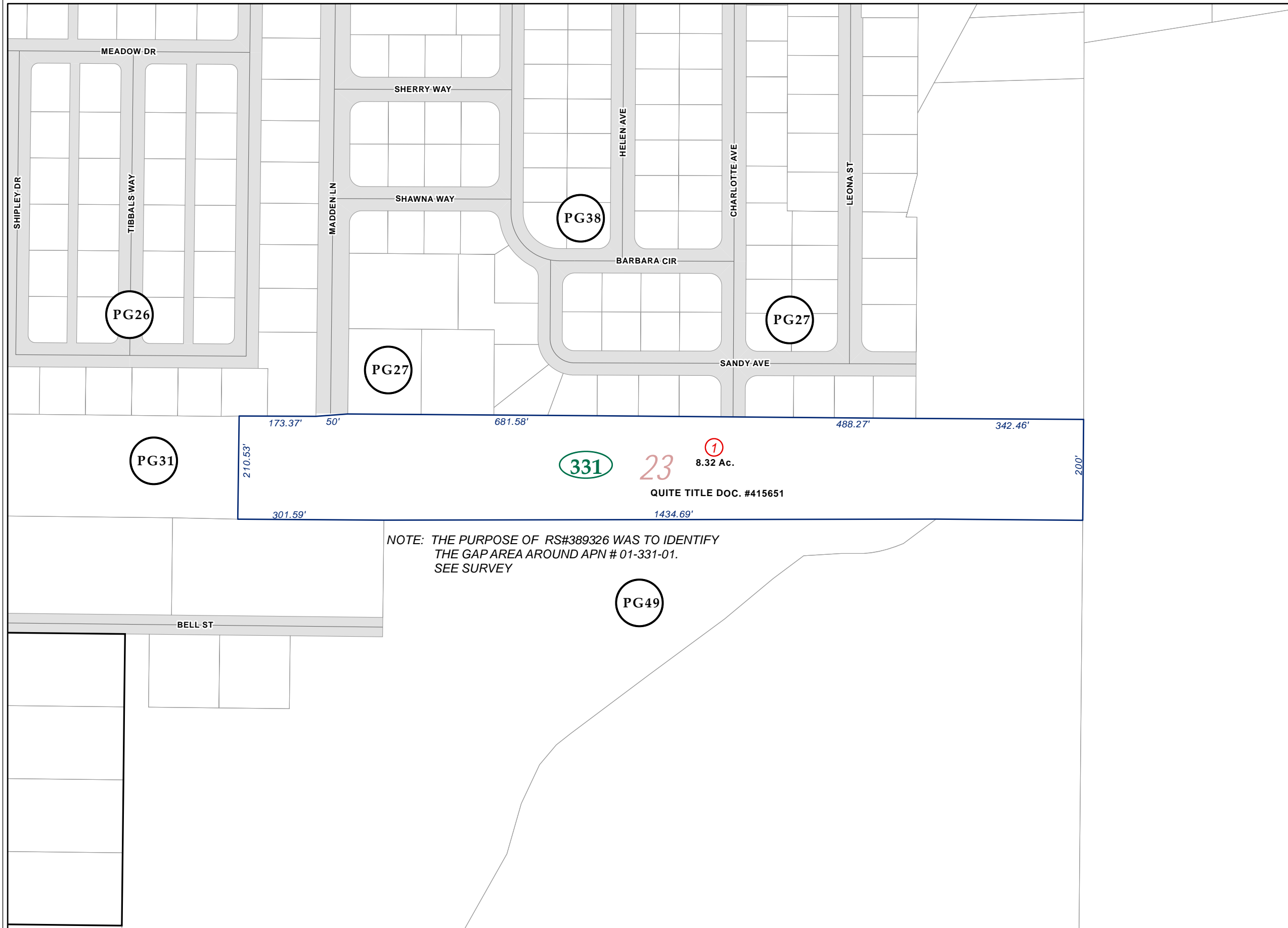
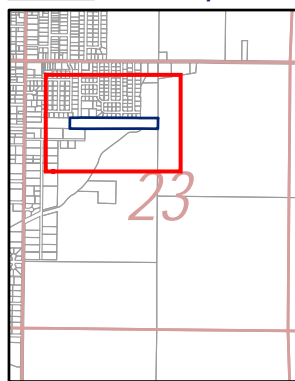
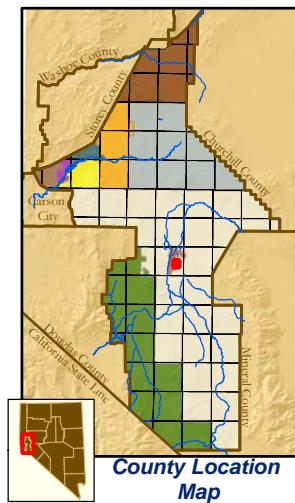


Portion N1/2 NW1/4 Section 23, T13N-R25E, MD&M

1-33



NOTE: THE PURPOSE OF RS#389326 WAS TO IDENTIFY THE GAP AREA AROUND APN # 01-331-01. SEE SURVEY



Map Elements

- ✦ 1/4 Corner Section
- * Section Ties
- 300' Dimensions
- 1 Parcel Lot
- ① Parcel Number
- ③ Parcel Number
- 0.13 Ac. Acreage of Parcel
- PM 136149 Recorded Map Image
- ▭ Parcel Boundaries
- ④11 Block Number
- ⓀK12 PG06 Parcel Book & Page Number
- ⓀPG24 Page Number

Cities & Townships

- Dayton
- Dayton Valley
- Fernley
- Mark Twain
- Mason Valley
- Mound House
- Silver City
- Silver Springs
- Smith Valley
- Stagecoach
- Yerington

Scale: 1" = 200'
 Revised: October 30, 2006

NOTE: This is for assessment use only and does not represent a survey. No liability is assumed as to the accuracy of the data delineated hereon. Use of this plat for other than assessment purposes is forbidden unless approved by the Lyon County Assessor's Office.

YERINGTON